

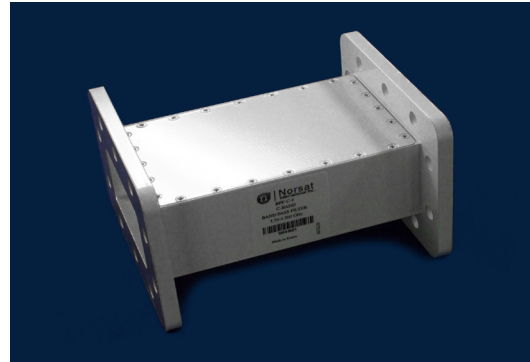


MICROWAVE COMPONENT

C-BAND BAND PASS FILTER

APPLICATIONS

- Rejects terrestrial interference in C-Band (5G, Radar and C-Band transmitter)
- Easily installed between the feed and LNB
- Suitable for use with Norsat's C-Band LNBs
- Environmentally sealed and moisture resistant (IP66)



SPECIFICATIONS (BPF-C-1)

Frequency Range	3.70 to 4.20 GHz
VSWR	1.4 : 1 max.
Insertion Loss in Band	0.5 dB max.
Rejection	25 dB min at 3.650 GHz and 4.250 GHz 60 dB min at 3.550 GHz and 4.350 GHz 70 dB min at 3.500 GHz and 4.400 GHz
Group delay variation within +/-0.5MHz	0.6 nsec
Waveguide Flange	CPR-229G (input), CPR-229F (output)
Dimensions (L x W x H)	120 mm x 100 mm x 70 mm
Weight	< 650 g

SPECIFICATIONS (BPF-C-3)

Frequency Range	3.754 to 4.20 GHz
VSWR	1.4 : 1 max.
Insertion Loss in Band	0.5 dB max.
Rejection	25 dB min at 3.704 GHz and 4.250 GHz 60 dB min at 3.604 GHz and 4.350 GHz 70 dB min at 3.554 GHz and 4.400 GHz
Group delay variation within +/-0.5MHz	0.6 nsec
Waveguide Flange	CPR-229G (input), CPR-229F (output)
Dimensions (L x W x H)	120 mm x 100 mm x 70 mm
Weight	< 650 g

SPECIFICATIONS (BPF-C-2)

Frequency Range	3.625 to 4.20 GHz
VSWR	1.4 : 1 max.
Insertion Loss in Band	0.5 dB max.
Rejection	25 dB min at 3.575 GHz and 4.250 GHz 60 dB min at 3.475 GHz and 4.350 GHz 70 dB min at 3.425 GHz and 4.400 GHz
Group delay variation within +/-0.5MHz	0.6 nsec
Waveguide Flange	CPR-229G (input), CPR-229F (output)
Dimensions (L x W x H)	120 mm x 100 mm x 70 mm
Weight	< 650 g

SPECIFICATIONS (BPF-C-4)

Frequency Range	3.80 to 4.20 GHz
VSWR	1.4 : 1 max.
Insertion Loss in Band	0.5 dB max.
Rejection	25 dB in at 3.750 GHz and 4.250 GHz 60 dB min at 3.650 GHz and 4.350 GHz 70 dB min at 3.600 GHz and 4.400 GHz
Group delay variation within +/-0.5MHz	0.6 nsec
Waveguide Flange	CPR-229G (input), CPR-229F (output)
Dimensions (L x W x H)	120 mm x 100 mm x 70 mm
Weight	< 650 g

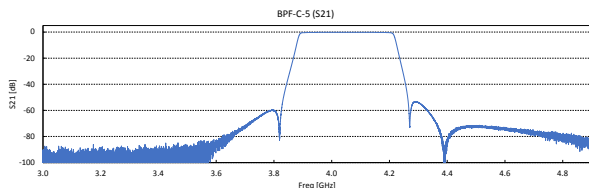
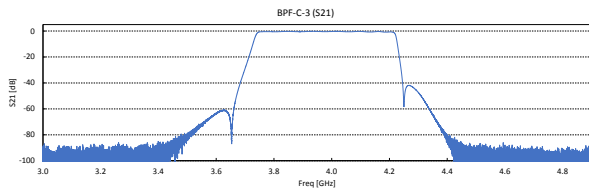
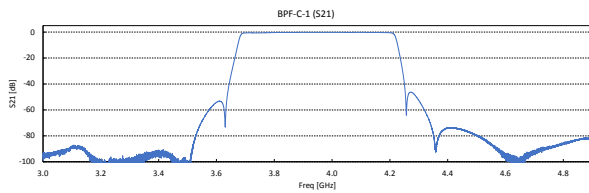


SPECIFICATIONS (BPF-C-5)

Frequency Range	3.90 to 4.20 GHz
VSWR	1.4 : 1 max.
Insertion Loss in Band	0.5 dB max.
Rejection	25 dB min at 3.850 GHz and 4.250 GHz 60 dB min at 3.750 GHz and 4.350 GHz 70 dB min at 3.700 GHz and 4.400 GHz
Group delay variation within +/-0.5MHz	0.6 nsec
Waveguide Flange	CPR-229G (input), CPR-229F (output)
Dimensions (L x W x H)	120 mm x 100 mm x 70 mm
Weight	< 650 g

SPECIFICATIONS (BPF-C-7)

Frequency Range	4.10 to 4.20 GHz
VSWR	1.4 : 1 max.
Insertion Loss in Band	0.5 dB max.
Rejection	25 dB min at 4.05 GHz and 4.250 GHz 60 dB min at 3.950 GHz and 4.350 GHz 70 dB min at 3.900 GHz and 4.400 GHz
Group delay variation within +/-0.5MHz	0.6 nsec
Waveguide Flange	CPR-229G (input), CPR-229F (output)
Dimensions (L x W x H)	120 mm x 100 mm x 70 mm
Weight	< 650 g

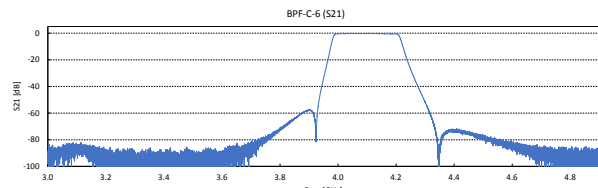
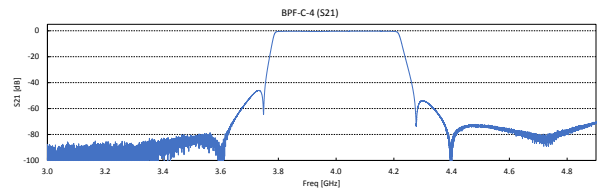
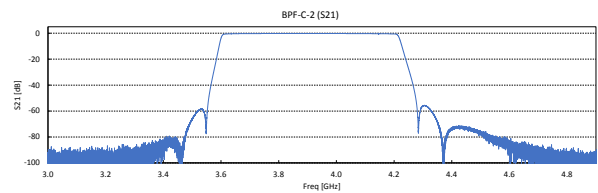


SPECIFICATIONS (BPF-C-6)

Frequency Range	4.00 to 4.20 GHz
VSWR	1.4 : 1 max.
Insertion Loss in Band	0.5 dB max.
Rejection	25 dB min at 3.950 GHz and 4.250 GHz 60 dB min at 3.850 GHz and 4.350 GHz 70 dB min at 3.800 GHz and 4.400 GHz
Group delay variation within +/-0.5MHz	0.6 nsec
Waveguide Flange	CPR-229G (input), CPR-229F (output)
Dimensions (L x W x H)	120 mm x 100 mm x 70 mm
Weight	< 650 g

SPECIFICATIONS (BPF-C-8)

Frequency Range	3.82 to 4.20 GHz
VSWR	1.4 : 1 max.
Insertion Loss in Band	0.5 dB max.
Rejection	25 dB min at 3.77 GHz and 4.250 GHz 60 dB min at 3.67 GHz and 4.350 GHz 70 dB min at 3.620 GHz and 4.400 GHz
Group delay variation within +/-0.5MHz	0.6 nsec
Waveguide Flange	CPR-229G (input), CPR-229F (output)
Dimensions (L x W x H)	120 mm x 100 mm x 70 mm
Weight	< 650 g



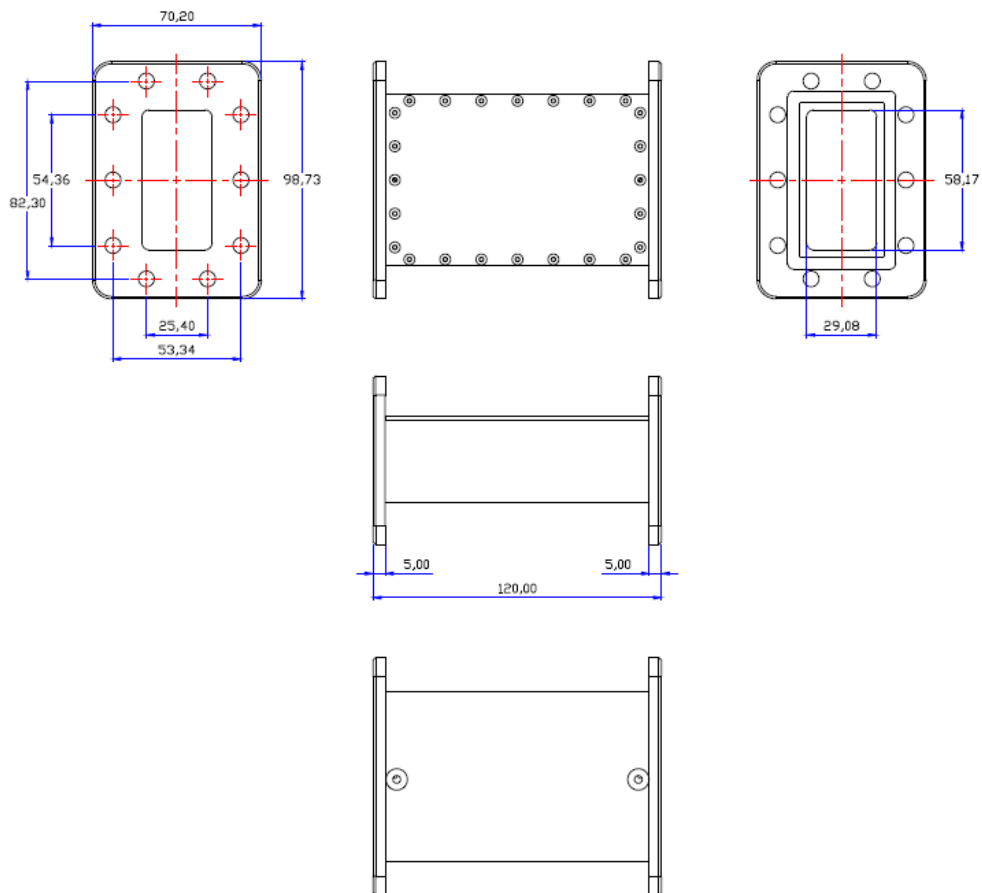


HOW TO ORDER

BPF-C-1

- FREQUENCY**
- 1: 3.70 - 4.20 GHz
 - 2: 3.625 - 4.20 GHz
 - 3: 3.754 - 4.20 GHz
 - 4: 3.80 - 4.20 GHz
 - 5: 3.90 - 4.20 GHz
 - 6: 4.00 - 4.20 GHz
 - 7: 4.10 - 4.20 GHz
 - 8: 3.82 - 4.20 GHz

MECHANICAL DIAGRAM



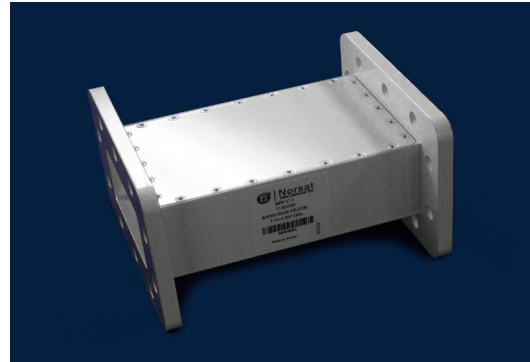


MICROWAVE COMPONENT

C-BAND BAND PASS FILTER

APPLICATIONS

- Made in China
- Rejects terrestrial interference in C-Band (5G, Radar and C-Band transmitter)
- Easily installed between the feed and LNB
- Suitable for use with Norsat's C-Band LNBs
- Environmentally sealed and moisture resistant (IP66)



SPECIFICATIONS (BPF-CN-1)

Frequency Range	3.70 to 4.20 GHz
VSWR	1.4 : 1 max.
Insertion Loss in Band	0.5 dB max.
Rejection	25 dB min at 3.650 GHz and 4.250 GHz 60 dB min at 3.550 GHz and 4.350 GHz 70 dB min at 3.500 GHz and 4.400 GHz
Group delay variation within +/-0.5MHz	0.6 nsec
Waveguide Flange	CPR-229G (input), CPR-229F (output)
Dimensions (L x W x H)	120 mm x 100 mm x 70 mm
Weight	< 650 g

SPECIFICATIONS (BPF-CN-3)

Frequency Range	3.754 to 4.20 GHz
VSWR	1.4 : 1 max.
Insertion Loss in Band	0.5 dB max.
Rejection	25 dB min at 3.704 GHz and 4.250 GHz 60 dB min at 3.604 GHz and 4.350 GHz 70 dB min at 3.554 GHz and 4.400 GHz
Group delay variation within +/-0.5MHz	0.6 nsec
Waveguide Flange	CPR-229G (input), CPR-229F (output)
Dimensions (L x W x H)	120 mm x 100 mm x 70 mm
Weight	< 650 g

SPECIFICATIONS (BPF-CN-2)

Frequency Range	3.625 to 4.20 GHz
VSWR	1.4 : 1 max.
Insertion Loss in Band	0.5 dB max.
Rejection	25 dB min at 3.575 GHz and 4.250 GHz 60 dB min at 3.475 GHz and 4.350 GHz 70 dB min at 3.425 GHz and 4.400 GHz
Group delay variation within +/-0.5MHz	0.6 nsec
Waveguide Flange	CPR-229G (input), CPR-229F (output)
Dimensions (L x W x H)	120 mm x 100 mm x 70 mm
Weight	< 650 g

SPECIFICATIONS (BPF-CN-4)

Frequency Range	3.80 to 4.20 GHz
VSWR	1.4 : 1 max.
Insertion Loss in Band	0.5 dB max.
Rejection	25 dB in at 3.750 GHz and 4.250 GHz 60 dB min at 3.650 GHz and 4.350 GHz 70 dB min at 3.600 GHz and 4.400 GHz
Group delay variation within +/-0.5MHz	0.6 nsec
Waveguide Flange	CPR-229G (input), CPR-229F (output)
Dimensions (L x W x H)	120 mm x 100 mm x 70 mm
Weight	< 650 g

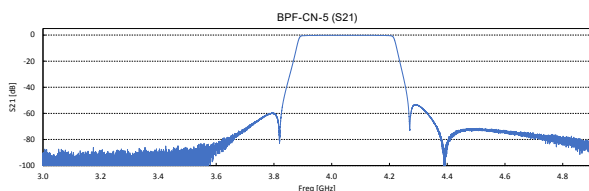
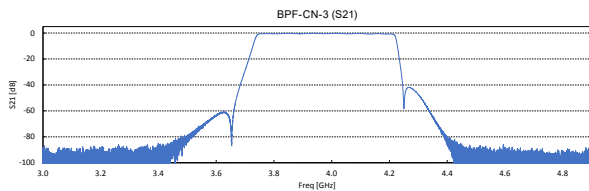
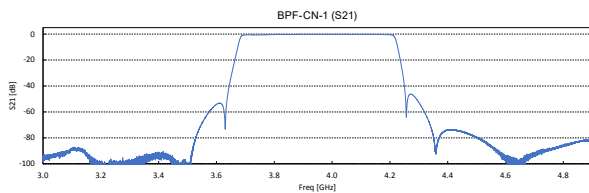


SPECIFICATIONS (BPF-CN-5)

Frequency Range	3.90 to 4.20 GHz
VSWR	1.4 : 1 max.
Insertion Loss in Band	0.5 dB max.
Rejection	25 dB min at 3.850 GHz and 4.250 GHz 60 dB min at 3.750 GHz and 4.350 GHz 70 dB min at 3.700 GHz and 4.400 GHz
Group delay variation within +/-0.5MHz	0.6 nsec
Waveguide Flange	CPR-229G (input), CPR-229F (output)
Dimensions (L x W x H)	120 mm x 100 mm x 70 mm
Weight	< 650 g

SPECIFICATIONS (BPF-CN-7)

Frequency Range	4.10 to 4.20 GHz
VSWR	1.4 : 1 max.
Insertion Loss in Band	0.5 dB max.
Rejection	25 dB min at 4.05 GHz and 4.250 GHz 60 dB min at 3.950 GHz and 4.350 GHz 70 dB min at 3.900 GHz and 4.400 GHz
Group delay variation within +/-0.5MHz	0.6 nsec
Waveguide Flange	CPR-229G (input), CPR-229F (output)
Dimensions (L x W x H)	120 mm x 100 mm x 70 mm
Weight	< 650 g

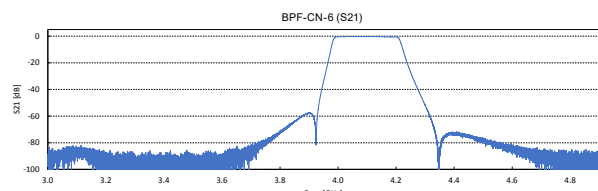
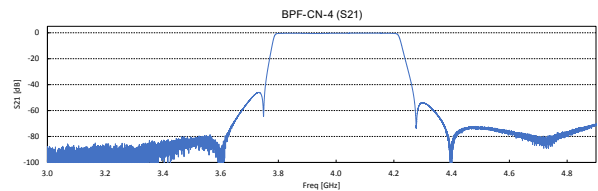
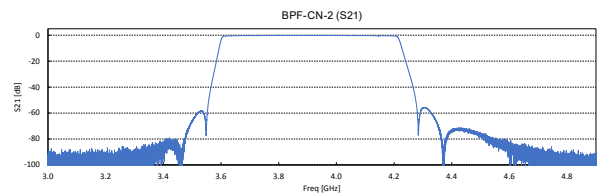


SPECIFICATIONS (BPF-CN-6)

Frequency Range	4.00 to 4.20 GHz
VSWR	1.4 : 1 max.
Insertion Loss in Band	0.5 dB max.
Rejection	25 dB min at 3.950 GHz and 4.250 GHz 60 dB min at 3.850 GHz and 4.350 GHz 70 dB min at 3.800 GHz and 4.400 GHz
Group delay variation within +/-0.5MHz	0.6 nsec
Waveguide Flange	CPR-229G (input), CPR-229F (output)
Dimensions (L x W x H)	120 mm x 100 mm x 70 mm
Weight	< 650 g

SPECIFICATIONS (BPF-CN-8)

Frequency Range	3.82 to 4.20 GHz
VSWR	1.4 : 1 max.
Insertion Loss in Band	0.5 dB max.
Rejection	25 dB min at 3.77 GHz and 4.250 GHz 60 dB min at 3.67 GHz and 4.350 GHz 70 dB min at 3.620 GHz and 4.400 GHz
Group delay variation within +/-0.5MHz	0.6 nsec
Waveguide Flange	CPR-229G (input), CPR-229F (output)
Dimensions (L x W x H)	120 mm x 100 mm x 70 mm
Weight	< 650 g



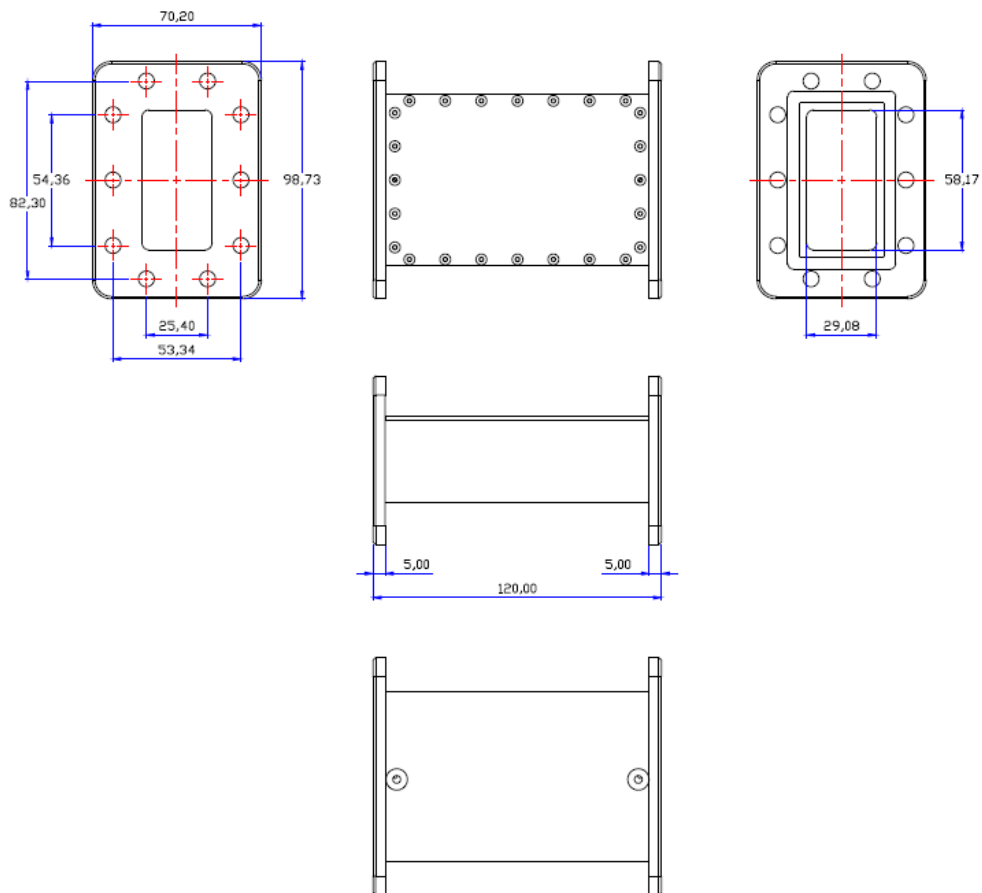


HOW TO ORDER

BPF-CN-1

- FREQUENCY**
- 1: 3.70 - 4.20 GHz
 - 2: 3.625 - 4.20 GHz
 - 3: 3.754 - 4.20 GHz
 - 4: 3.80 - 4.20 GHz
 - 5: 3.90 - 4.20 GHz
 - 6: 4.00 - 4.20 GHz
 - 7: 4.10 - 4.20 GHz
 - 8: 3.82 - 4.20 GHz

MECHANICAL DIAGRAM



Request A Quote