



LNB

C-BAND PLL

3000-BPF SERIES

5G INTERFERENCE LNB

SPECIFICATIONS



Noise Temperature	37K typ., 60K max. at room temp. @ CF
Phase Noise (SSB) max.	-80 dBc/Hz at 1kHz -85 dBc/Hz at 10kHz -95 dBc/Hz at 100kHz
Input VSWR	2.2 : 1 max.
Output VSWR	2.5 : 1 max.
Gain	60 dB typ., 55 dB min., 70 dB max.
Gain Flatness (over full band)	≤ 6 dB p-p
Output P1dB	+ 9 dBm min.
Interference Rejection Signal	-25 dBm max. with no degradation

DC Power	+ 12V to + 24V DC
Current	400 mA max.
Input (waterproof)	CPR229G waveguide grooved
Output (waterproof)	F-Connector (75 Ohm) N-Connector (50 Ohm)
Dimensions (L x W x H) (F connector)	159 mm x 98.5 mm x 70mm (6.26 in x 3.88 in x 2.75 in)
Weight	500 g (17.64 oz)
Operating Temperature	- 40 to + 60°C
Storage Temperature	- 50 to + 70°C

FREQUENCY BANDS

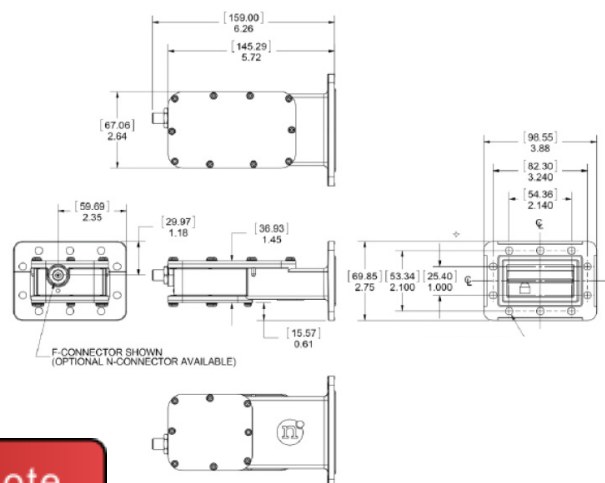
	Option 1	Option 2	Option 3	Option 4	Option 5	Option 6	Option 7	Option 8
Frequency Band (GHz)	3.70 - 4.20	3.625 - 4.20	3.754 - 4.20	3.80 - 4.20	3.90 - 4.20	4.00 - 4.20	4.10 - 4.20	3.82 - 4.20
L.O. Frequency (GHz)	5.15	5.15	5.15	5.15	5.15	5.15	5.15	5.15
IF Frequency (MHz)	950 - 1450	950 - 1525	950 - 1396	950 - 1350	950 - 1250	950 - 1150	950 - 1050	950 - 1330
Rejection Range	< 3.6 GHz and > 4.8 GHz	< 3.525 GHz and > 4.8 GHz	< 3.654 GHz and > 4.8 GHz	< 3.7 GHz and > 4.8 GHz	< 3.8 GHz and > 4.8 GHz	< 3.9 GHz and > 4.8 GHz	< 4.0 GHz and > 4.8 GHz	< 3.72 GHz and > 4.8 GHz

HOW TO ORDER

3200N-BPF-1

FREQUENCY (OPTION)	1: 3.70 - 4.20 GHz 2: 3.625 - 4.20 GHz 3: 3.754 - 4.20 GHz 4: 3.80 - 4.20 GHz 5: 3.90 - 4.20 GHz 6: 4.00 - 4.20 GHz 7: 4.10 - 4.20 GHz 8: 3.82 - 4.20 GHz
CONNECTOR	F - 75 Ohm N - 50 Ohm
L.O. STABILITY	0: ± 2 kHz 1: ±10 kHz 2: ±25 kHz 5: ±100 kHz
LNB SERIES #	

MECHANICAL DIAGRAM



Request A Quote