



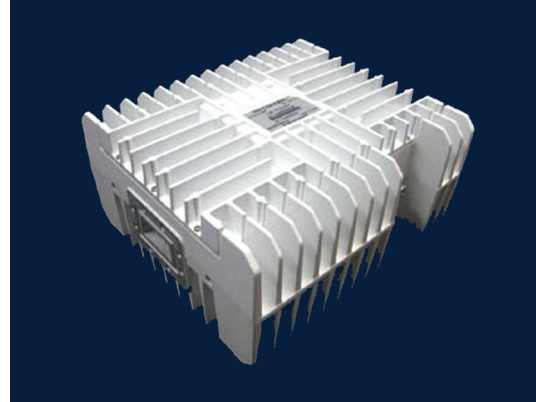
# BUC

## C-BAND 10W 20W

### ELMTBC

#### ELEMENT SERIES

#### SPECIFICATIONS



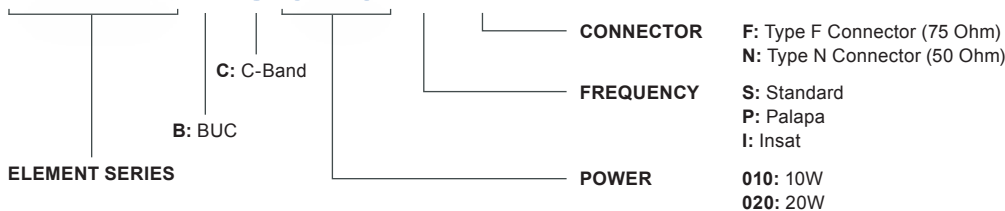
	ELMTBC010	ELMTBC020		ELMTBC010	ELMTBC020
<b>Output Power (P1dB)</b>	40 dBm min.	43 dBm min.	<b>Input Voltage</b>	+18V to +24V DC via IFL	+36V to +60V DC
<b>Output Power (P<sub>sat</sub>)</b>	40.5 dBm min.	43.5 dBm min.	<b>Power Consumption</b>	80W max.	180W max.
<b>Phase Noise (SSB) max.</b>	-70 dBc/Hz at 100Hz -80 dBc/Hz at 1kHz -90 dBc/Hz at 10kHz -100 dBc/Hz at 100kHz	-65 dBc/Hz at 100Hz -75 dBc/Hz at 1kHz -85 dBc/Hz at 10kHz -95 dBc/Hz at 100kHz	<b>Input (waterproof)</b>	Type F Connector (75 Ohm) Type N Connector (50 Ohm)	
<b>Linear Gain</b>	65 dB typ., 60 dB min., 70 dB max.	69 dB typ., 64 dB min., 74 dB max.	<b>Output (waterproof)</b>	CPR-137G	
<b>Gain Flatness:</b>			<b>Dimensions (L x W x H)</b>	220 mm x 194.2 mm x 103.5 mm (8.6 in x 7.65 in x 4.07 in)	220 mm x 196 mm x 138 mm (8.66 in x 7.72 in x 5.43 in)
<b>Over Full Band</b>		≤ 4.0 dB p-p	<b>Weight</b>	4.5 kg (9.92 lb)	5 kg (11 lb)
<b>Over Any 54 MHz</b>		≤ 1.5 dB p-p	<b>Operating Temperature</b>	-40 to +55°C	
<b>Over Temperature</b>		≤ 4.0 dB p-p	<b>Storage Temperature</b>	-40 to +80°C	
<b>Output Spurious:</b>			<b>Humidity</b>	0-100% condensing	
<b>In-Band</b>		≤ -60 dBc	<b>External Ref Freq</b>	10 MHz (sine-wave), -5 to +5 dBm	
<b>Out-of-Band</b>		≤ -50 dBc	<b>Enclosed Accessories</b>	Screws, Gasket	
<b>Noise Power Density</b>		-80 dBm/Hz in Tx -156 dBm/Hz in Rx			
<b>Input VSWR</b>		2.0 : 1 max.			
<b>Output VSWR</b>		2.0 : 1 max.			

#### FREQUENCY BANDS

	S: Standard	P: Palapa	I: Insat
<b>Transmit Frequency (GHz)</b>	5.850 - 6.425	6.425 - 6.725	6.725 - 7.025
<b>L.O. Frequency (GHz)</b>	4.90	5.275	5.75
<b>IF Frequency (MHz)</b>	950 - 1525	1150 - 1450	975 - 1275

#### HOW TO ORDER

## ELMTBC010-PN



Request A Quote



# C-BAND 10W 20W BUC: ELMTBC

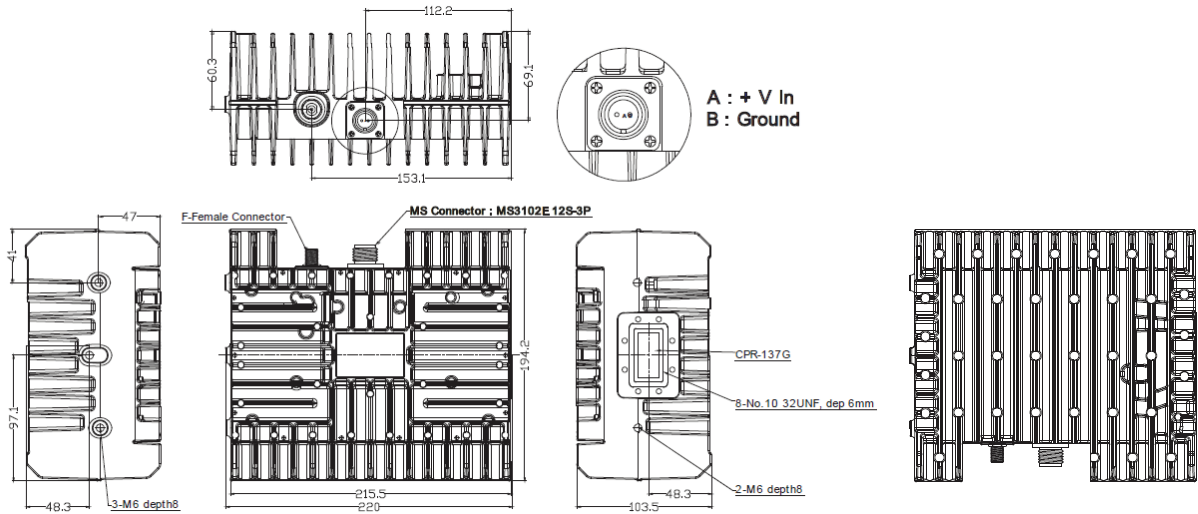
## OPTIONAL ACCESSORIES

Power Supply for 20W BUC

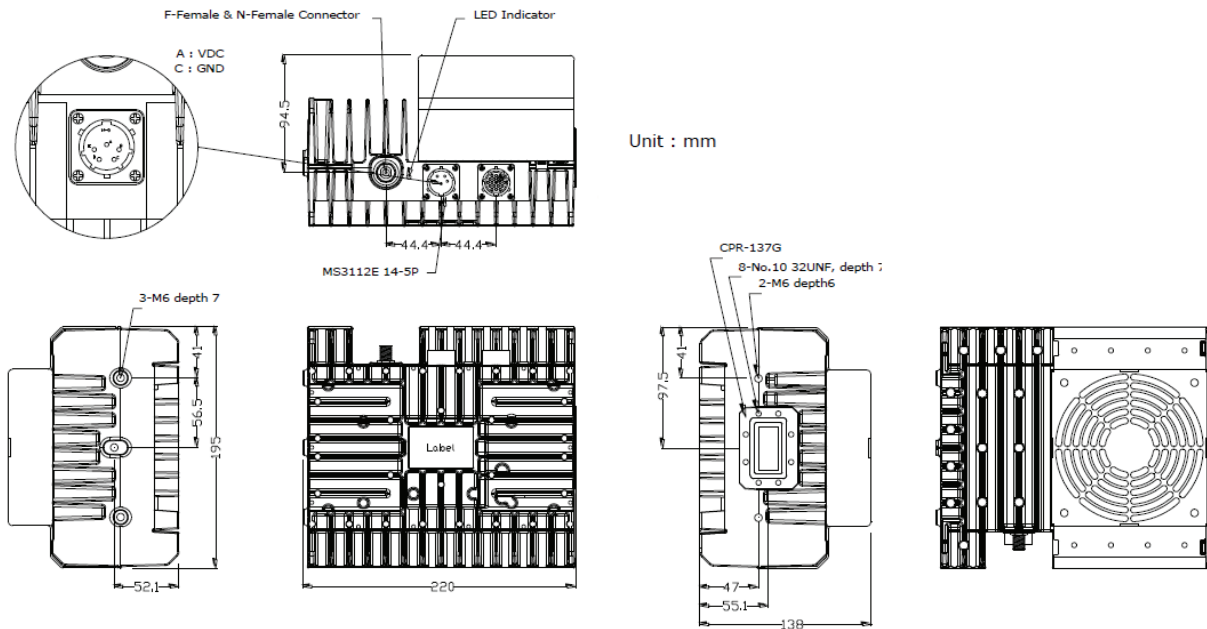
PS400-ELMT

## MECHANICAL DIAGRAM

ELMTBC010



ELMTBC020



Unit : mm