



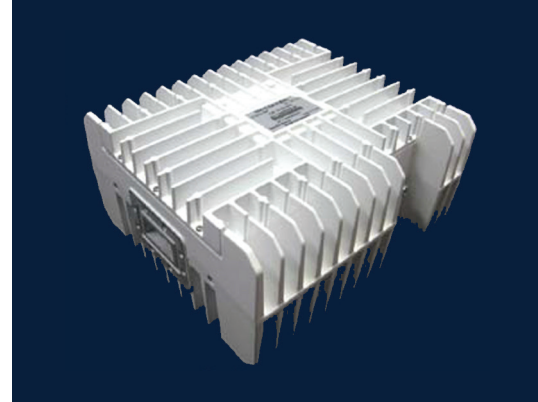
BUC

C-BAND 10W 20W

ELMTBC

ELEMENT SERIES

SPECIFICATIONS



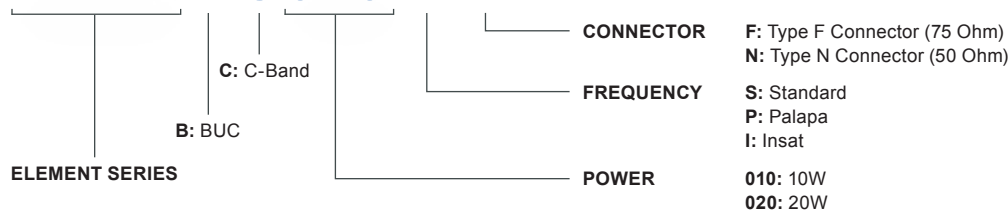
	ELMTBC010	ELMTBC020		ELMTBC010	ELMTBC020
Output Power (P1dB)	40 dBm min.	43 dBm min.	Input Voltage	+18V to +24V DC via IFL	+36V to +60V DC
Output Power (P_{sat})	40.5 dBm min.	43.5 dBm min.	Power Consumption	80W max.	180W max.
Phase Noise (SSB) max.	-70 dBc/Hz at 100Hz -80 dBc/Hz at 1kHz -90 dBc/Hz at 10kHz -100 dBc/Hz at 100kHz	-65 dBc/Hz at 100Hz -75 dBc/Hz at 1kHz -85 dBc/Hz at 10kHz -95 dBc/Hz at 100kHz	Input (waterproof)	Type F Connector (75 Ohm) Type N Connector (50 Ohm)	
Linear Gain	65 dB typ., 60 dB min., 70 dB max.	69 dB typ., 64 dB min., 74 dB max.	Output (waterproof)	CPR-137G	
Gain Flatness:			Dimensions (L x W x H)	220 mm x 194.2 mm x 103.5 mm (8.6 in x 7.65 in x 4.07 in)	220 mm x 196 mm x 138 mm (8.66 in x 7.72 in x 5.43 in)
Over Full Band		≤ 4.0 dB p-p	Weight	4.5 kg (9.92 lb)	5 kg (11 lb)
Over Any 54 MHz		≤ 1.5 dB p-p	Operating Temperature	-40 to +55°C	
Over Temperature		≤ 4.0 dB p-p	Storage Temperature	-40 to +80°C	
Output Spurious: In-Band		≤ -60 dBc	Humidity	0-100% condensing	
Out-of-Band		≤ -50 dBc	External Ref Freq	10 MHz (sine-wave), -5 to +5 dBm	
Noise Power Density		-80 dBm/Hz in Tx -156 dBm/Hz in Rx	Enclosed Accessories	Screws, Gasket	
Input VSWR		2.0 : 1 max.			
Output VSWR		2.0 : 1 max.			

FREQUENCY BANDS

	S: Standard	P: Palapa	I: Insat
Transmit Frequency (GHz)	5.850 - 6.425	6.425 - 6.725	6.725 - 7.025
L.O. Frequency (GHz)	4.90	5.275	5.75
IF Frequency (MHz)	950 - 1525	1150 - 1450	975 - 1275

HOW TO ORDER

ELMTBC010-PN





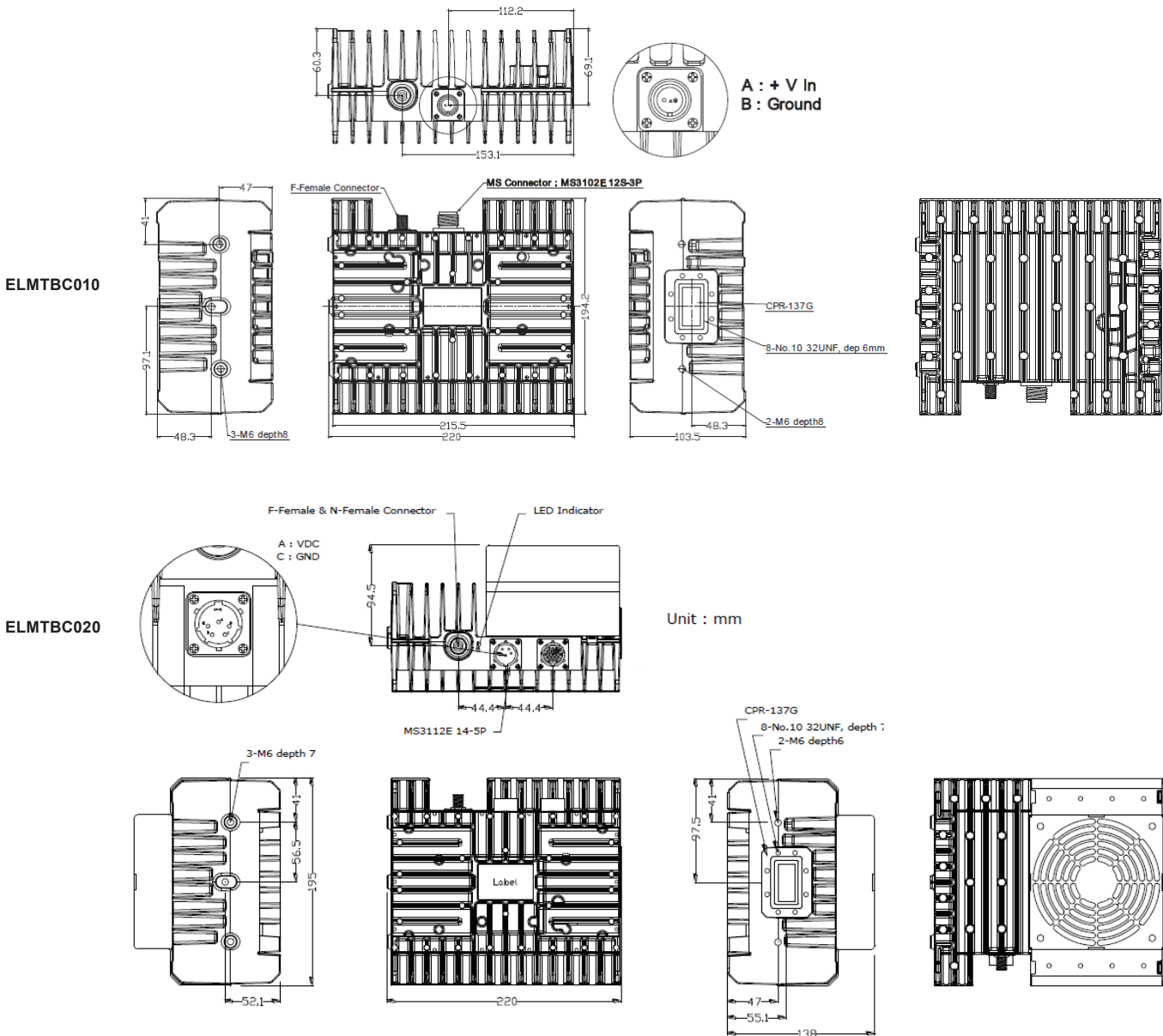
C-BAND 10W 20W BUC: ELMTBC

OPTIONAL ACCESSORIES

Power Supply for 20W BUC

PS400-ELMT

MECHANICAL DIAGRAM



Request A Quote