



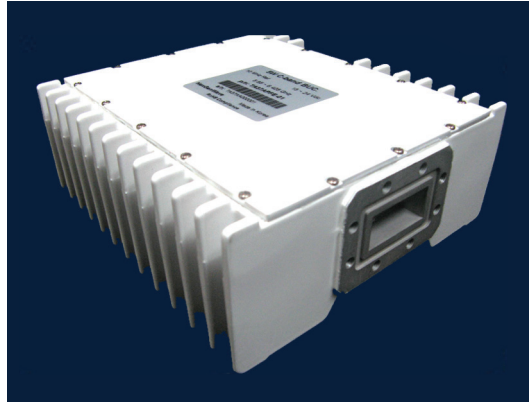
BUC

C-BAND 5W

ELMTBC005

ELEMENT SERIES

SPECIFICATIONS



Output Power (P1dB)	37 dBm min.
Output Power (Psat)	37.5 dBm min.
Phase Noise (SSB) max.	-60 dBc/Hz at 100 Hz -70 dBc/Hz at 1 kHz -80 dBc/Hz at 10 kHz -90 dBc/Hz at 100 kHz -100 dBc/Hz at 1 MHz
Linear Gain	61 dB typ., 56 dB min., 66 dB max.
Gain Flatness:	Over Full Band ≤ 4.0 dB p-p Over Any 54 MHz ≤ 1.5 dB p-p Over Temperature ≤ 4.0 dB p-p
Output Spurious:	In-Band ≤ -60 dBc Out-of-Band ≤ -50 dBc
Noise Power Density	-80 dBm/Hz in Tx -156 dBm/Hz in Rx
Input VSWR	2.0 : 1 max.
Output VSWR	2.0 : 1 max.

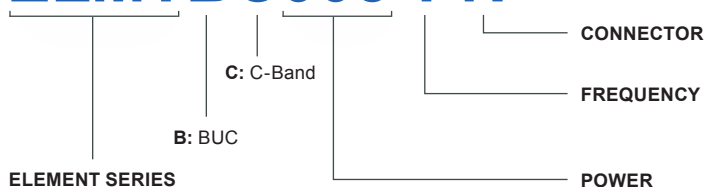
Input Voltage	+15V to +24V DC via IFL
Power Consumption	55W max.
Input (waterproof)	Type F Connector (75 Ohm) Type N Connector (50 Ohm)
Output (waterproof)	CPR-137G waveguide grooved
Dimensions (L x W x H)	176.1 mm x 161.5 mm x 65 mm (6.93 in x 6.35 in x 2.55 in)
Weight	1.8 kg (3.97 lb)
Operating Temperature	-40 to +55°C
Storage Temperature	-40 to +80°C
Humidity	0-100% condensing
External Ref Freq	10 MHz (sine-wave), -5 to +5 dBm
Enclosed Accessories	Screws, Gasket

FREQUENCY BANDS

	S: Standard	P: Palapa	I: Insat
Transmit Frequency (GHz)	5.850 - 6.425	6.425 - 6.725	6.725 - 7.025
L.O. Frequency (GHz)	4.90	5.275	5.75
IF Frequency (MHz)	950 - 1525	1150 - 1450	975 - 1275

HOW TO ORDER

ELMTBC005-PN



F: Type F Connector (75 Ohm)
N: Type N Connector (50 Ohm)

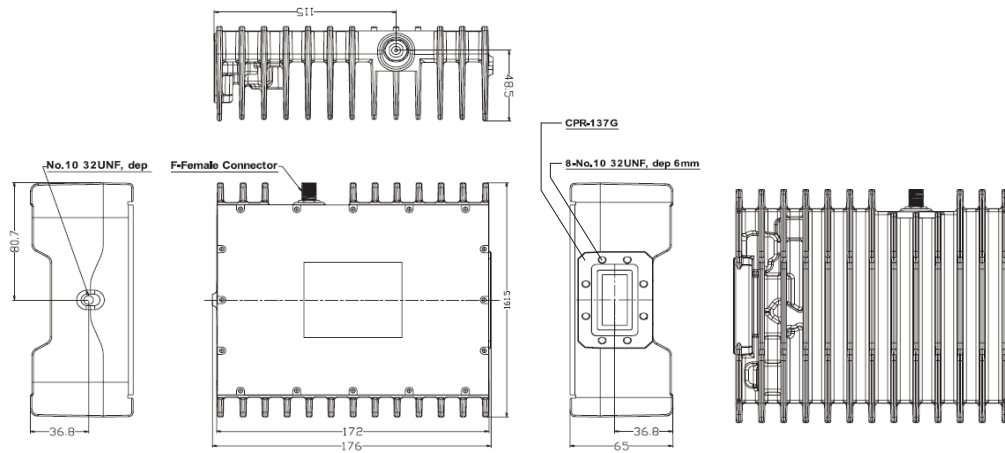
S: Standard
P: Palapa
I: Insat

005: 5W



C-BAND 5W BUC: ELMTBC005

MECHANICAL DIAGRAM



Request A Quote