



# BDC X-BAND XT1000 SERIES



## SPECIFICATIONS

<b>Noise Figure</b>	13 dB max. at room temp.
<b>L.O. Stability</b>	Phase Locked to External Reference
<b>Phase Noise (SSB) max.</b>	Depends on External Reference
<b>Input VSWR</b>	2.2 : 1
<b>Output VSWR</b>	2.2 : 1
<b>Gain</b>	30 dB typ., 28 dB min., 32 dB max.
<b>Gain Flatness (over full band)</b>	≤ 4 dB p-p
<b>Output P1dB</b>	+ 5 dBm min.

<b>DC Power</b>	+15V to +24 V DC
<b>Current</b>	300 mA max.
<b>Input (waterproof)</b>	N-Connector (50 Ohm)
<b>Output (waterproof)</b>	F-Connector (75 Ohm) N-Connector (50 Ohm)
<b>Dimensions (L x W x H)</b>	139 mm x 80 mm x 42 mm (5.47 in x 3.15 in x 1.65 in)
<b>Weight</b>	600 g (21.16 oz)
<b>Operating Temperature</b>	- 40 to + 60°C
<b>Storage Temperature</b>	- 50 to + 70°C
<b>External Ref Freq</b>	10 MHz (sine-wave), -10 to 0 dBm

## FREQUENCY BANDS

<b>Frequency Band (GHz)</b>	8.0 - 8.7
<b>L.O. Frequency (GHz)</b>	7.05
<b>IF Frequency (MHz)</b>	950 - 1650

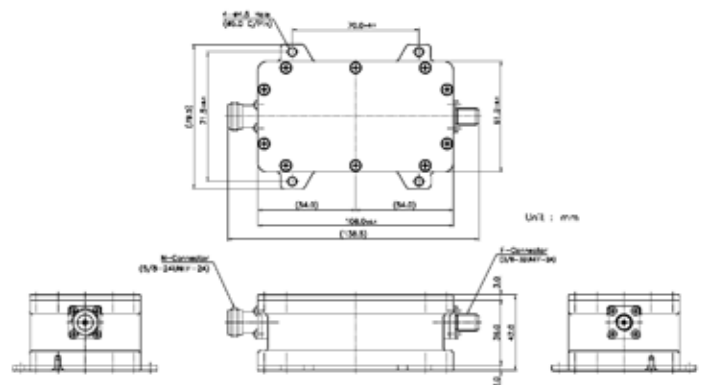
## HOW TO ORDER

# BDC-XT1000N

**CONNECTOR** F - 75 Ohm  
N - 50 Ohm

**BDC SERIES #**

## MECHANICAL DIAGRAM



[Request A Quote](#)