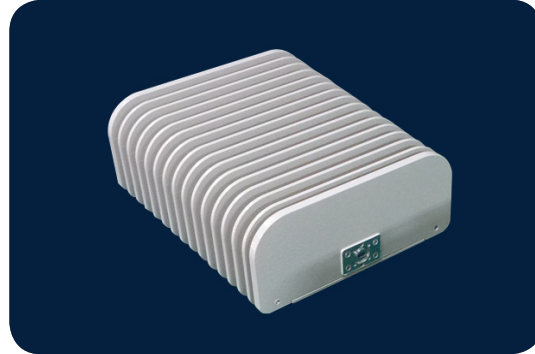




BUC

KA-BAND 5W

7005STC - O3B



TYPICAL SPECIFICATIONS

Output Frequency	A: 27.652 – 28.388 GHz B: 28.172 – 29.071 GHz
Input Frequency	A: 1052 - 1788 MHz B: 972 - 1871 MHz
L.O. Frequency	A: 26.60 GHz B: 27.20 GHz
Frequency Conversion	Double conversion
Frequency sense	No inversion
Saturate Output Power	37 dBm min. @ -40°C to 25°C 36 dBm min. @ up to 55°C
Maximum linear output power	35 dBm min.
Input Return Loss	10 dB max
Output Return Loss	10 dB max
Phase noise (SSB)	-73 dBc max. at 1kHz -83 dBc max. at 10kHz -93 dBc max. at 100kHz
External Reference (Sig Freq)	10 MHz
External Reference level	-5 to +5 dBm
External Reference(Ph/Noise)	-145 dBc/Hz max. @1KHz
Spectral Regrowth	25 dBc max @ 35 dBm
Group delay variation	±5.0 nanoseconds over any 216MHz

SPURIOUS

Signal rated	-60dBc max @ 35dBm
Signal independent	-60dBm
2IF+LO	-60dBc @ 35dBm
LO Leakage	-60dBm
Gain	58 dB (typ)
Gain stability over temp	±2.5 dB at any const. frequency
Gain flatness	±1.5 dB in any 216 MHz ±2.5 dB over full band
Operating Temp	-40°C to 55°C
Power requirements	+36 to +72 VDC supplied through MS connector
Power consumption	88W (max)
Input Interface	N-female
Output Interface	WR-28
Dimensions	200 (L) x 180 (W) x 80 (H) mm
Weight	2.5kg
M & C interface	Ethernet or RS232 through MS3112e14-12P connector - Output power - Temperature - LO status - Output power mute

HOW TO ORDER

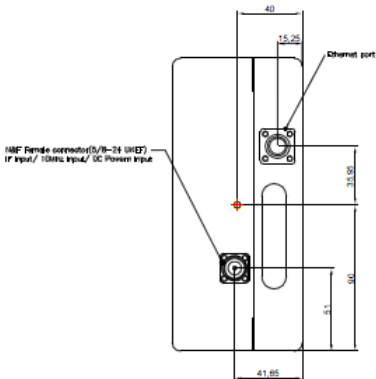
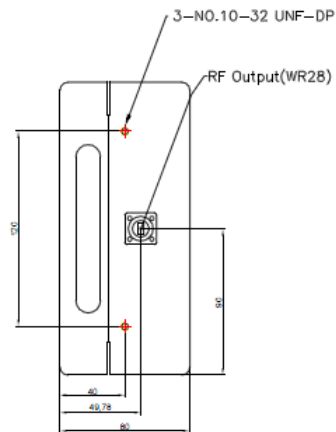
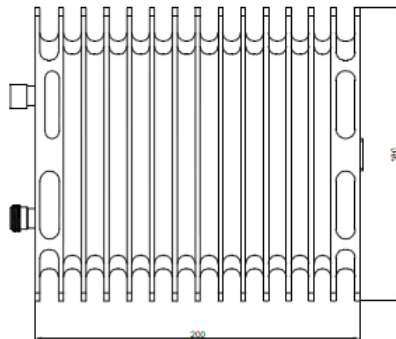
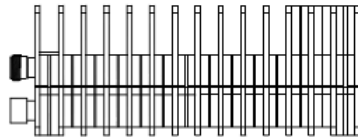
7005-O3B-A



KA-BAND 5W 7005STC - O3B

Connector	Parameter	Description
J1	IF Input Connector	N-Female, panel mounted
	Impedance	50 ohm
	10 MHz Reference input	
J2	RF output connector	WR28
J3	DC/M&C (Ethernet or RS232)	Panel-mount (MS3112e14-12P)
	J3-A	Ethernet Tx-
	J3-B	Ethernet Tx+
	J3-C	Ethernet Rx+
	J3-D	Ethernet Rx-
	J3-E	
	J3-F	RS-232 GND
	J3-G	RS-232 TxD
	J3-H	RS-232 RxD
	J3-J	DC Power (+36 to +72V)
	J3-K	DC Power return
	J3-L	Mute @ High
	J3-M	Mute return (=RS-232 GND)

MECHANICAL DIAGRAM



Request A Quote