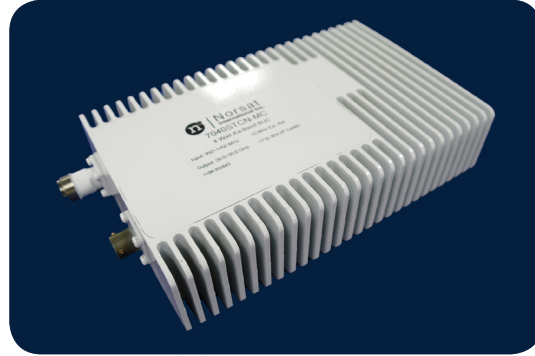




BUC

KA-BAND 7020STC

2W NON-INVERTED

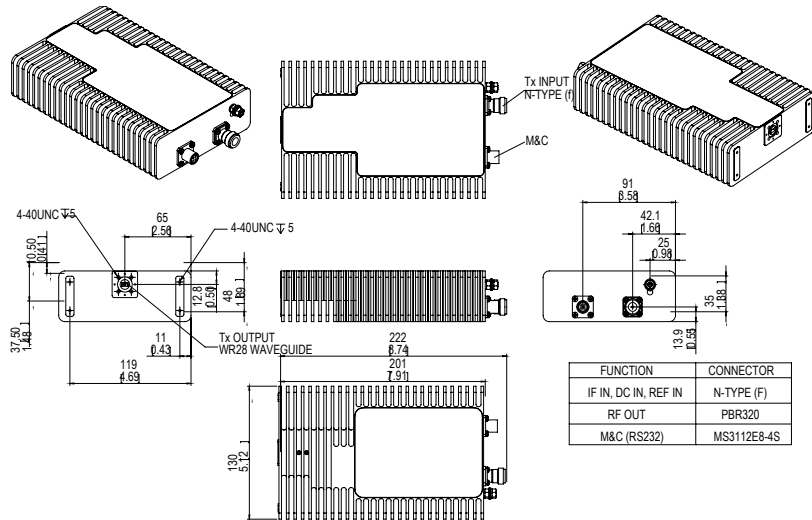


TYPICAL SPECIFICATIONS

Output frequency	29.5 GHz to 30.0 GHz
Input frequency	950 to 1450 MHz
Output to P1dB	33 dBm
L.O. frequency options	28.55 GHz
Input VSWR	1.5 : 1
Output VSWR	2.0 : 1
Phase noise (SSB)	-47 dBc/Hz at 100 Hz -72 dBc/Hz at 1 kHz -77 dBc/Hz at 10 kHz -92 dBc/Hz at 100 kHz -105 dBc/Hz at 1 MHz
External reference signal frequency	10 MHz
Power requirements	+17 to +30 V supplied through center conductor of IF cable
Output Waveguide	WR28
Dimensions	220 (L) x 130 (W) x 48 (H) mm (8.7" x 5.1" x 1.9")
Weight	1.5 kg

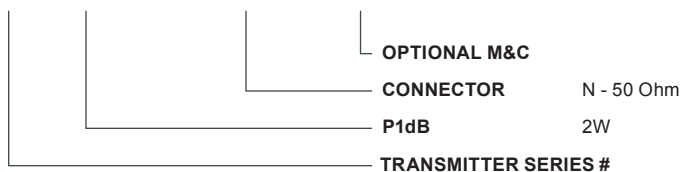
External reference level	-5 to +5 dBm
10 MHz external reference phase noise	-140 dBc/Hz at 1 kHz
Gain	55 dB
Gain stability over temperature	±2.0 dB at any constant frequency
Gain stability over operating temperature	±2.0 dB over full band
Temperature Range	-30°C to +60°C
OPTIONAL	
Monitor & Control	RS232 PLL Lock Tx on/off

MECHANICAL DIAGRAM



HOW TO ORDER

7020STCN-MC



Request A Quote