

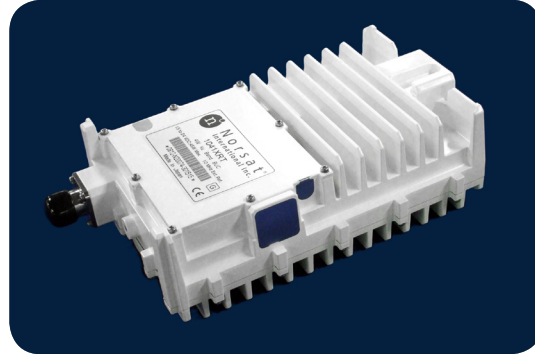


# BUC

## KU-BAND 1041XRTS

### 4W NON-INVERTED

#### SELECTABLE

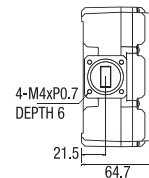
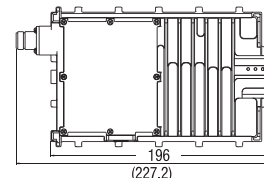
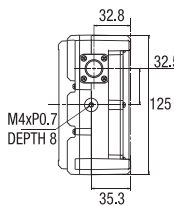
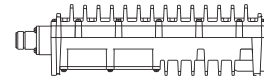
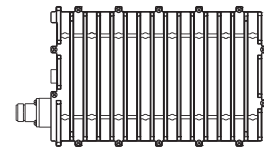


### TYPICAL SPECIFICATIONS

|  |   |
|--|---|
| <b>Output frequency</b>                    | 13.75 to 14.50 GHz<br>(14.0 to 14.50 GHz)                         |
| <b>Input frequency</b>                     | 950 to 1700 MHz<br>(950 to 1450 MHz)                              |
| <b>Output to P1dB</b>                      | 36 dBm  |
| <b>L.O. frequency</b>                      | 12.80 GHz<br>(13.05 GHz)  |
| <b>Input VSWR</b>                          | 2.0 : 1   |
| <b>Output VSWR</b>                         | 2.1 : 1   |
| <b>Phase noise (SSB)</b>                   | -70 dBc/Hz at 1kHz<br>-80 dBc/Hz at 10kHz<br>-90 dBc/Hz at 100kHz |
| <b>External reference signal frequency</b> | 10 MHz  |
| <b>Power requirements</b>                  | +15 to +24V supplied through center conductor of IF cable         |
| <b>Power consumption</b>                   | 45 W  |
| <b>Output Waveguide</b>                    | WR75 - grooved  |
| <b>Dimensions</b>                          | 228 (L) x 125 (W) x 65 (H) mm<br>(9.0 x 4.9 x 2.6 in)             |
| <b>Weight</b>                              | 1.9 kg / 4.2 lb   |

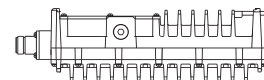
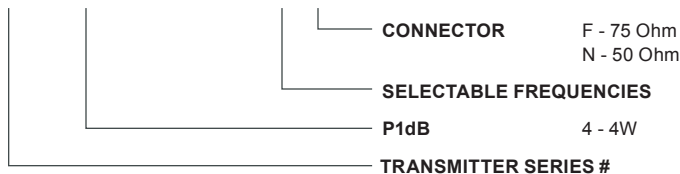
|  |  |
|--|--|
| <b>External reference level</b>                                  | -5 to +5 dBm   |
| <b>10 MHz external reference phase noise</b>                     | -135 dBc/Hz at 100 Hz<br>-140 dBc/Hz at 1 kHz<br>-150 dBc/Hz at 10 kHz |
| <b>Gain (including variation over temperature and frequency)</b> | 50 dB min<br>60 dB max   |
| <b>Gain stability over temperature</b>                           | ±2.25 dB at any constant frequency                                     |
| <b>Gain stability in-band at any constant temperature</b>        | ±1.0 dB in any 54 MHz band<br>±3.0 dB over full 750 MHz band           |
| <b>Temperature Range</b>   | -40°C to +55°C   |

### MECHANICAL DIAGRAM



### HOW TO ORDER

## 1041XRTSF



Request A Quote