



LNB

QUAD-BAND PLL

1000HU



TYPICAL SPECIFICATIONS

Noise Figure	0.8 dB	Current	350 mA
LO Stability	±10kHz, ±25 kHz	Specs for Tone	
LO Phase Noise	-73 dBc at 1 kHz -78 dBc at 10 kHz -100 dBc at 100 kHz -110 dBc at 1 MHz	Freq.	22 kHz ±4 kHz
Gain	55 dB	Amp.	0.6 ± 0.2 V
Output P1dB	+15 dBm	Duty Cycle	50% ±10%
DC Power		Input Waveguide	WR-75
Band 1	13 V	Output (waterproof)	F-connector (75 ohm) N (Optional) (50 ohm)
Band 2	13 V / 22KHz Tone	Dimensions	140 x 70 x 44 (L x W x H)
Band 3	18 V	Weight	300 g
Band 4	18 V / 22KHz Tone	Operating Temperature	-30 ~ +60°C
		Storage Temperature	-40 ~ +80°C

FREQUENCY BANDS AVAILABLE

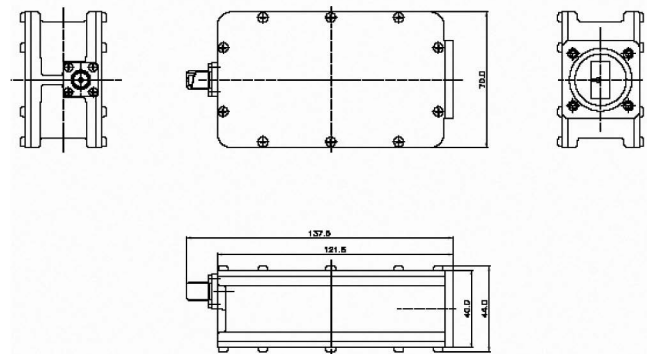
	Band 1	Band 2	Band 3	Band 4
Frequency Band (RF Input)	10.7 ~ 11.7 GHz	10.95 ~ 11.7 GHz	11.7 ~ 12.75 GHz	12.25 ~ 12.75 GHz
LO Frequency	9.75 GHz	10.00 GHz	10.75 GHz	11.30 GHz
IF Frequency	950 ~ 1950 MHz	950 ~ 1700 MHz	950 ~ 2000 MHz	950 ~ 1450 MHz

HOW TO ORDER

1208HUF

CONNECTOR	F - Standard N - Optional
NOISE FIGURE	0.8 dB
LO STABILITY	1: ±10 kHz 2: ±25 kHz
LNB SERIES #	

MECHANICAL DIAGRAM



Request A Quote