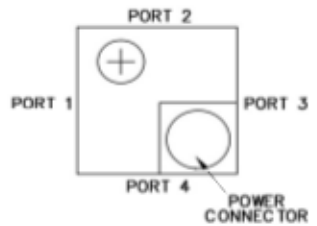
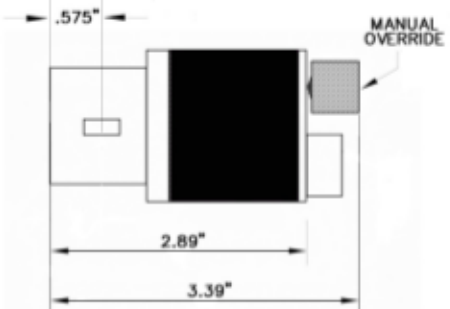
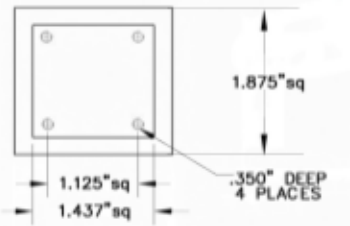


REVISONS		APPROVALS			
SYN	DESCRIPTION	DATE	ENGR	PRED	D.A.



1.0 ELECTRICAL

- 1.1 OPERATING FREQUENCY: 26.5 - 40.0 GHZ (TELECOM BANDS)
- 1.2 RETURN LOSS: -23DB MIN
- 1.3 ISOLATION: 55DB MIN
- 1.4 INSERTION LOSS: .15DB MAX
- 1.5 POWER HANDLING: 400W
- 1.6 DRIVING VOLTAGE: OPTIONAL
- 1.7 C-FORM CONTACTS: 2 IN STD UNIT
- 1.8 INHIBIT CONTACTS: OPTIONAL (OPEN BEFORE VSWR EXCEEDS 1.3:1)
- 1.9 SWITCHING TIME: 60 MSEC MAX
- 1.10 POWER CONNECTOR: KPT02E12-10P or KPT2E10-6P

2.0 MECHANICAL

- 2.1 WAVEGUIDE SIZE: WR28
- 2.2 FLANGE: OPTIONAL
- 2.3 PRESSURE: 20 PSI (INCLUDING DRIVER)
- 2.4 MATERIAL: 80% ALUMINUM
- 2.5 FINISH: LUSTERON ON WAVEGUIDE, ANODIZE ON DRIVER
- 2.6 WEIGHT: .33 KG

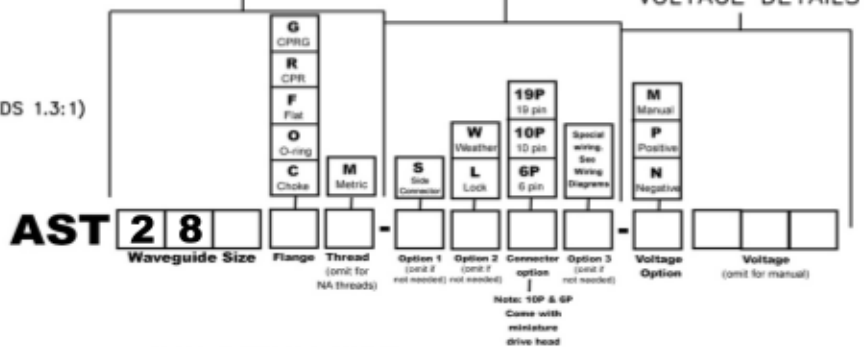
3.0 ENVIRONMENTAL

- 3.1 OPERATING TEMP: -40' TO +75' C
- 3.2 NON OPERATING TEMP: -50' TO +100' C
- 3.3 HUMIDITY: 100%
- 3.4 SHOCK & VIBRATION: STD SHIPPING

WAVEGUIDE DETAILS

DRIVER DETAILS

VOLTAGE DETAILS



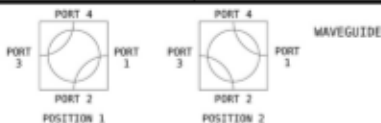
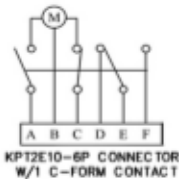
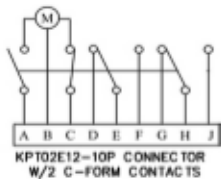
BREAK ALL CORNERS AND SHARP EDGES

UNLESS OTHERWISE SPECIFIED	UNGR	MC	01/21/2007
FRACTIONAL: + 1/32	CHECKER		
DECIMAL: .00X + .010			
ANGULAR: .XX + .020			

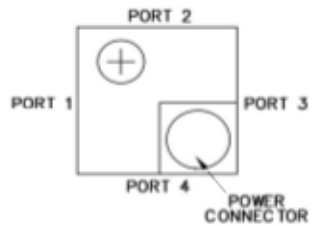
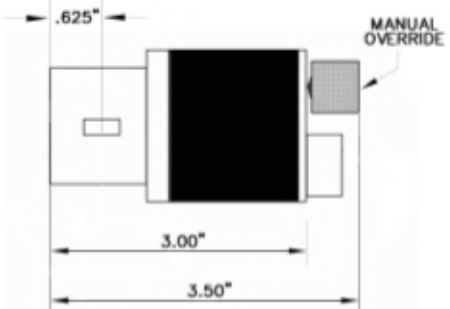
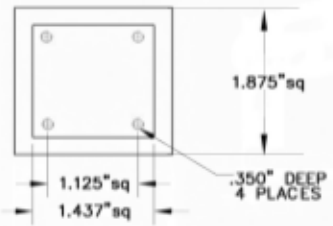
PROPRIETARY INFORMATION  
 THIS DOCUMENT CONTAINS PROPRIETARY INFORMATION WHICH SHALL NOT BE REPRODUCED, TRANSMITTED TO OTHER DOCUMENTS, ENCLOSED TO STORES, USED FOR REPRODUCTION OR ANY OTHER PURPOSE WITHOUT PRIOR WRITTEN PERMISSION FROM AST.

<b>WAVEGUIDE SWITCH</b>	
<b>WR 28</b>	
SCALE	SHEET 1 OF 1

Request A Quote



REVISONS		APPROVALS			
SYN	DESCRIPTION	DATE	ENGR	PRED	D.A.



**1.0 ELECTRICAL**

- 1.1 OPERATING FREQUENCY: 22.0 - 33.0 GHZ (SELECT BANDS)
- 1.2 RETURN LOSS: -23DB MIN
- 1.3 ISOLATION: 55DB MIN
- 1.4 INSERTION LOSS: .15DB MAX
- 1.5 POWER HANDLING: 500W
- 1.6 DRIVING VOLTAGE: OPTIONAL
- 1.7 C-FORM CONTACTS: 2 IN STD UNIT
- 1.8 INHIBIT CONTACTS: OPTIONAL (OPEN BEFORE VSWR EXCEEDS 1.3:1)
- 1.9 SWITCHING TIME: 60 MSEC MAX
- 1.10 POWER CONNECTOR: KPT02E12-10P or KPT2E10-6P

**2.0 MECHANICAL**

- 2.1 WAVEGUIDE SIZE: WR34
- 2.2 FLANGE: OPTIONAL
- 2.3 PRESSURE: 20 PSI (INCLUDING DRIVER)
- 2.4 MATERIAL: 80% ALUMINUM
- 2.5 FINISH: LUSTERON ON WAVEGUIDE, ANODIZE ON DRIVER
- 2.6 WEIGHT: .33 KG

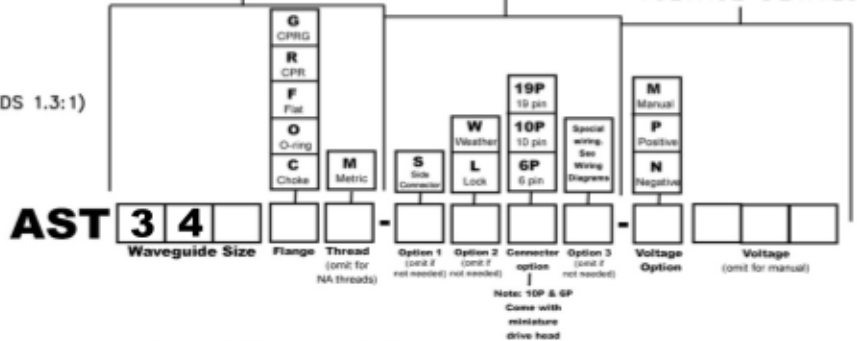
**3.0 ENVIRONMENTAL**

- 3.1 OPERATING TEMP: -40' TO +75' C
- 3.2 NON OPERATING TEMP: -50' TO +100' C
- 3.3 HUMIDITY: 100%
- 3.4 SHOCK & VIBRATION: STD SHIPPING

**WAVEGUIDE DETAILS**

**DRIVER DETAILS**

**VOLTAGE DETAILS**



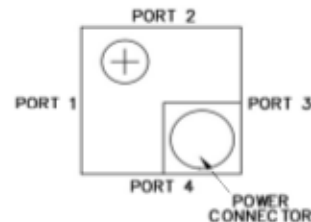
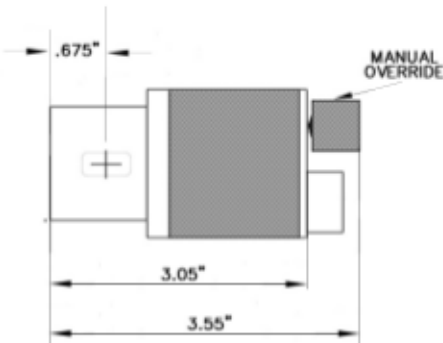
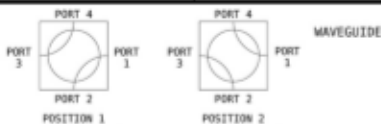
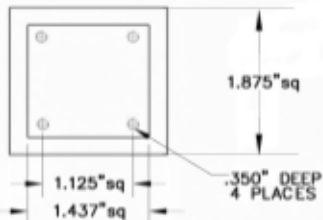
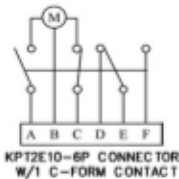
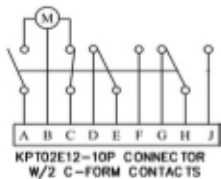
BREAK ALL CORNERS AND SHARP EDGES

UNLESS OTHERWISE SPECIFIED		UNITS	MC	01/21/2007
FRACTIONAL	+ 1/32	CHECKER		
DECIMAL	+ .010			
ANGULAR	+ .020			
	+ 1/2"			
MATERIAL: NOTED SPEC:				
FINISH: NOTED SPEC:				

**PROPRIETARY INFORMATION**  
THIS DOCUMENT CONTAINS PROPRIETARY INFORMATION WHICH SHALL NOT BE REPRODUCED, TRANSMITTED TO OTHER DOCUMENTS, ENCLOSED TO STORES, USED FOR REPRODUCTION OR ANY OTHER PURPOSE WITHOUT PRIOR WRITTEN PERMISSION FROM AST.

<b>WAVEGUIDE SWITCH</b>		
<b>WR 34</b>		
SCALE		SHEET 1 OF 1

Request A Quote



REVISIONS		APPROVALS			
SYN	DESCRIPTION	DATE	ENGR	PRED	D.A.

1.0 ELECTRICAL

- 1.1 OPERATING FREQUENCY: 18.0 - 26.5 GHZ
- 1.2 RETURN LOSS: -23DB MIN
- 1.3 ISOLATION: 60DB MIN
- 1.4 INSERTION LOSS: .15DB MAX
- 1.5 POWER HANDLING: 1KW CW MAX
- 1.6 DRIVING VOLTAGE: OPTIONAL
- 1.7 C-FORM CONTACTS: 2 IN STD UNIT
- 1.8 INHIBIT CONTACTS: OPTIONAL (OPEN BEFORE VSWR EXCEEDS 1.3:1)
- 1.9 SWITCHING TIME: 60 MSEC MAX
- 1.10 POWER CONNECTOR: KPT02E12-10P or KPT2E10-6P

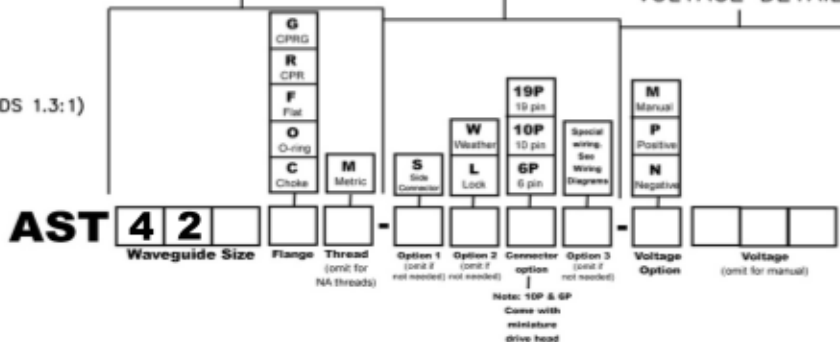
2.0 MECHANICAL

- 2.1 WAVEGUIDE SIZE: WR42
- 2.2 FLANGE: OPTIONAL
- 2.3 PRESSURE: 20 PSI (INCLUDING DRIVER)
- 2.4 MATERIAL: 80% ALUMINUM
- 2.5 FINISH: LUSTERON ON WAVEGUIDE, ANODIZE ON DRIVER
- 2.6 WEIGHT: .350 KG

WAVEGUIDE DETAILS

DRIVER DETAILS

VOLTAGE DETAILS



3.0 ENVIRONMENTAL

- 3.1 OPERATING TEMP: -40' TO +75' C
- 3.2 NON OPERATING TEMP: -50' TO +100' C
- 3.3 HUMIDITY: 100%
- 3.4 SHOCK & VIBRATION: STD SHIPPING

PROPRIETARY INFORMATION  
THIS DOCUMENT CONTAINS PROPRIETARY INFORMATION  
WHICH SHALL NOT BE REPRODUCED, TRANSMITTED TO  
OTHER DOCUMENTS, ENCLOSED TO STORES, USED FOR  
REPRODUCTION OR ANY OTHER PURPOSE WITHOUT  
PRIOR WRITTEN PERMISSION FROM AST.

BREAK ALL CORNERS AND SHARP EDGES

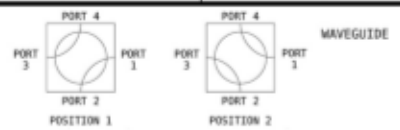
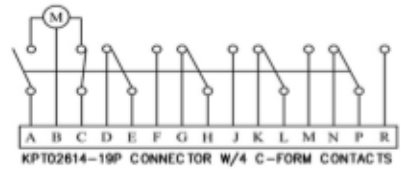
UNLESS OTHERWISE SPECIFIED	UNITS	MC	01/21/2007
FRACTIONAL: ± 1/32	CHECKER		
DECIMAL: .00X ± .010			
ANGULAR: °XX ± .020			
± 1/2°			
MATERIAL: NOTED SPEC:			
FINISH: NOTED SPEC:			

WAVEGUIDE SWITCH  
WR 42

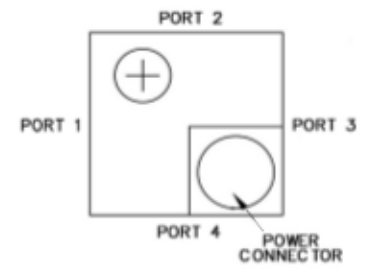
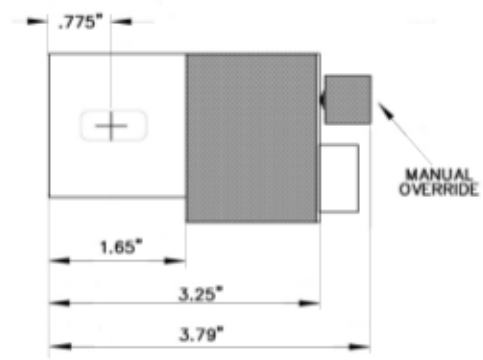
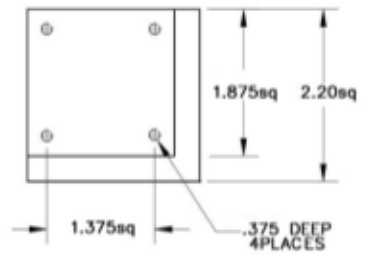
SCALE

SHEET 1 OF 1

Request A Quote



REVISIONS			APPROVALS		
SYN	DESCRIPTION	DATE	ENGR	PRD	D.A.



**1.0 ELECTRICAL**

- 1.1 OPERATING FREQUENCY: 12.4 - 18.0 GHZ
- 1.2 RETURN LOSS: -26DB MIN
- 1.3 ISOLATION: 70DB MIN
- 1.4 INSERTION LOSS: .05DB MAX
- 1.5 POWER HANDLING: 2.5KW CW
- 1.6 DRIVING VOLTAGE: OPTIONAL
- 1.7 C-FORM CONTACTS: 4 IN STD UNIT
- 1.8 INHIBIT CONTACTS: OPTIONAL (OPEN BEFORE VSWR EXCEEDS 1.3:1)
- 1.9 SWITCHING TIME: 80 MSEC MAX
- 1.10 POWER CONNECTOR: KPT02614-19P

**2.0 MECHANICAL**

- 2.1 WAVEGUIDE SIZE: WR62
- 2.2 FLANGE: OPTIONAL
- 2.3 PRESSURE: 20 PSI (INCLUDING DRIVER)
- 2.4 MATERIAL: 80% ALUMINUM
- 2.5 FINISH: LUSTERON ON WAVEGUIDE, ANODIZE ON DRIVER
- 2.6 WEIGHT: .480 KG

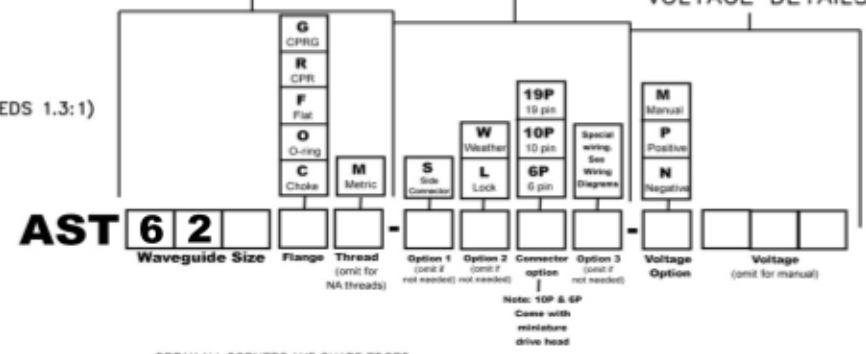
**3.0 ENVIRONMENTAL**

- 3.1 OPERATING TEMP: -40' TO +75' C
- 3.2 NON OPERATING TEMP: -50' TO +100' C
- 3.3 HUMIDITY: 100%
- 3.4 SHOCK & VIBRATION: STD SHIPPING

**WAVEGUIDE DETAILS**

**DRIVER DETAILS**

**VOLTAGE DETAILS**



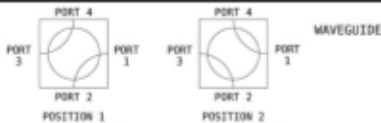
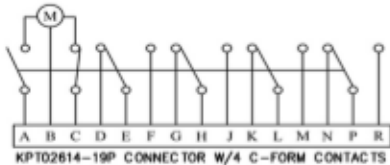
BREAK ALL CORNERS AND SHARP EDGES

UNLESS OTHERWISE SPECIFIED		UNITS	MC	01/21/2007
FRACTIONAL	+ 1/32	DO NOT SCALE	CHECKER	
DECIMAL	+ .010			
ANGULAR	+ .020			
MATERIAL: NOTED SPEC:				
FINISH: NOTED SPEC:				

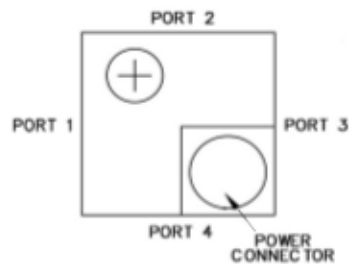
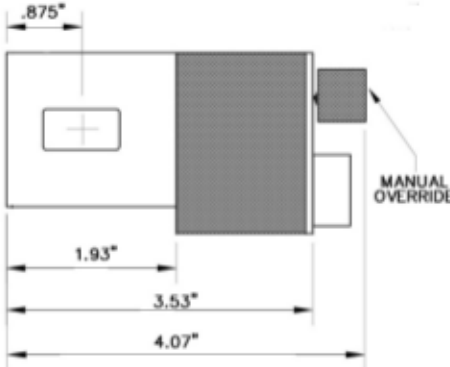
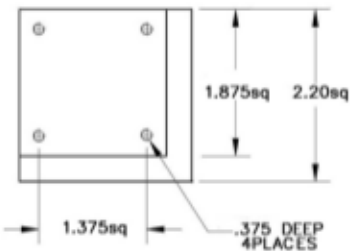
**PROPRIETARY INFORMATION**  
THIS DOCUMENT CONTAINS PROPRIETARY INFORMATION WHICH SHALL NOT BE REPRODUCED, TRANSMITTED TO OTHER DOCUMENTS, EXCLUDED TO STORES, USED FOR REPRODUCTION OR ANY OTHER PURPOSE WITHOUT PRIOR WRITTEN PERMISSION FROM AST.

<b>WAVEGUIDE SWITCH</b>	
<b>WR 62</b>	
SCALE	SHEET 1 OF 1

**Request A Quote**



REVISONS		APPROVALS			
SYN	DESCRIPTION	DATE	ENGR	PRED	D.A.



**1.0 ELECTRICAL**

- 1.1 OPERATING FREQUENCY: 10.0 - 15.0 GHZ
- 1.2 RETURN LOSS: -28DB MIN
- 1.3 ISOLATION: 70DB MIN
- 1.4 INSERTION LOSS: .05DB MAX
- 1.5 POWER HANDLING: 5KW CW
- 1.6 DRIVING VOLTAGE: OPTIONAL
- 1.7 C-FORM CONTACTS: 4 IN STD UNIT
- 1.8 INHIBIT CONTACTS: OPTIONAL (OPEN BEFORE VSWR EXCEEDS 1.3:1)
- 1.9 SWITCHING TIME: 80 MSEC MAX
- 1.10 POWER CONNECTOR: KPT02614-19P

**2.0 MECHANICAL**

- 2.1 WAVEGUIDE SIZE: WR75
- 2.2 FLANGE: OPTIONAL
- 2.3 PRESSURE: 20 PSI (INCLUDING DRIVER)
- 2.4 MATERIAL: 80% ALUMINUM
- 2.5 FINISH: LUSTERON ON WAVEGUIDE, ANODIZE ON DRIVER
- 2.6 WEIGHT: .500 KG

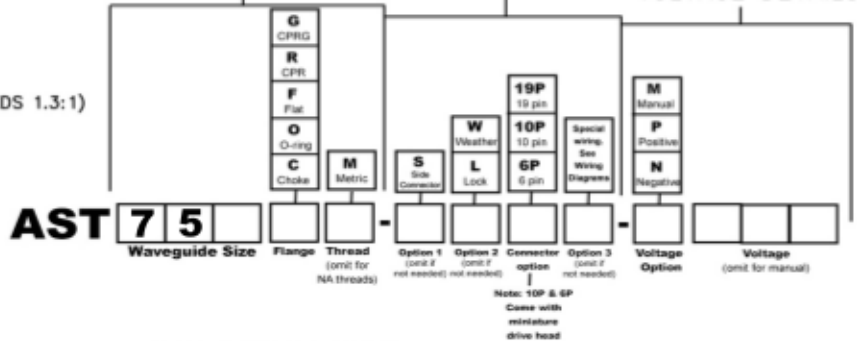
**3.0 ENVIRONMENTAL**

- 3.1 OPERATING TEMP: -40° TO +75° C
- 3.2 NON OPERATING TEMP: -50° TO +100° C
- 3.3 HUMIDITY: 100%
- 3.4 SHOCK & VIBRATION: STD SHIPPING

**WAVEGUIDE DETAILS**

**DRIVER DETAILS**

**VOLTAGE DETAILS**



BREAK ALL CORNERS AND SHARP EDGES

UNLESS OTHERWISE SPECIFIED		UNITS	MC	01/21/2007
FRACTIONAL	+ 1/32	CHECKER		
DECIMAL	+ .010			
ANGULAR	+ .020			
	+ 1/2°			

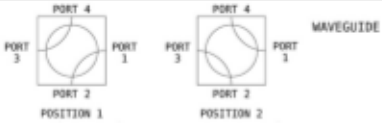
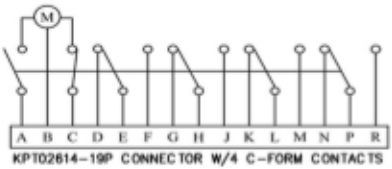
PROPRIETARY INFORMATION  
THIS DOCUMENT CONTAINS PROPRIETARY INFORMATION WHICH SHALL NOT BE REPRODUCED, TRANSMITTED TO OTHER DOCUMENTS, ENCLOSED TO STORES, USED FOR REPRODUCTION OR ANY OTHER PURPOSE WITHOUT PRIOR WRITTEN PERMISSION FROM AST.

WAVEGUIDE SWITCH  
WR 75

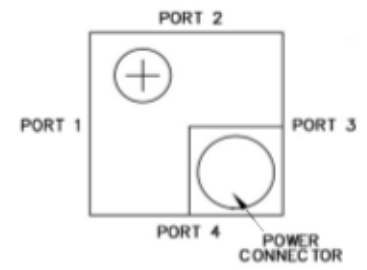
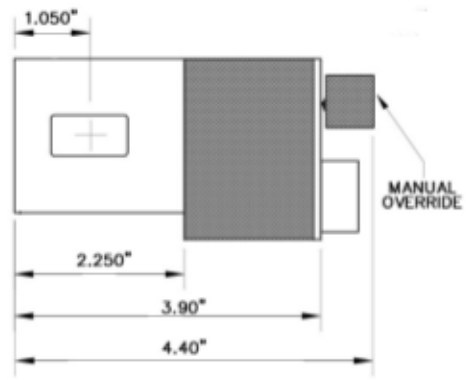
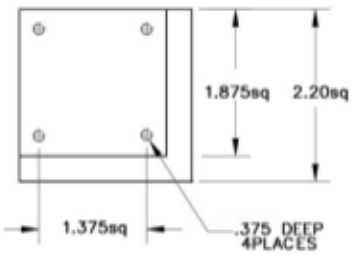
SCALE

SHEET 1 OF 1

Request A Quote



REVISIONS			APPROVALS		
SYN	DESCRIPTION	DATE	ENGR	PRD	D.A.



1.0 ELECTRICAL

- 1.1 OPERATING FREQUENCY: 8.2 - 12.4 GHZ
- 1.2 RETURN LOSS: -30DB MIN
- 1.3 ISOLATION: 70DB MIN
- 1.4 INSERTION LOSS: .05DB MAX
- 1.5 POWER HANDLING: 3.5KW CW
- 1.6 DRIVING VOLTAGE: OPTIONAL
- 1.7 C-FORM CONTACTS: 4 IN STD UNIT
- 1.8 INHIBIT CONTACTS: OPTIONAL (OPEN BEFORE VSWR EXCEEDS 1.3:1)
- 1.9 SWITCHING TIME: 80 MSEC MAX
- 1.10 POWER CONNECTOR: KPT02614-19P

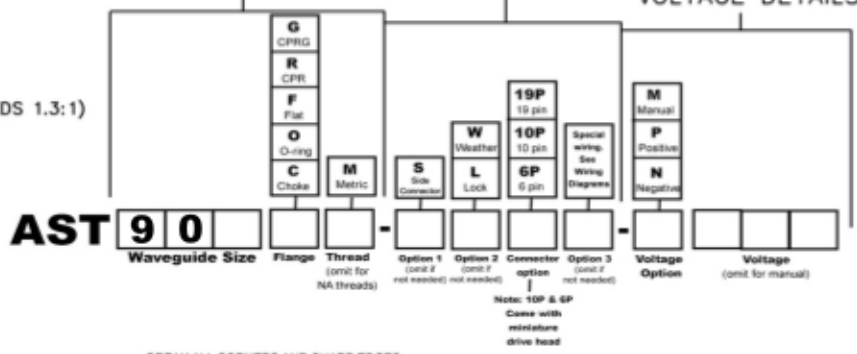
2.0 MECHANICAL

- 2.1 WAVEGUIDE SIZE: WR90
- 2.2 FLANGE: OPTIONAL
- 2.3 PRESSURE: 20 PSI (INCLUDING DRIVER)
- 2.4 MATERIAL: 80% ALUMINUM
- 2.5 FINISH: LUSTERON ON WAVEGUIDE, ANODIZE ON DRIVER
- 2.6 WEIGHT: .550 KG

WAVEGUIDE DETAILS

DRIVER DETAILS

VOLTAGE DETAILS



3.0 ENVIRONMENTAL

- 3.1 OPERATING TEMP: -40° TO +75° C
- 3.2 NON OPERATING TEMP: -50° TO +100° C
- 3.3 HUMIDITY: 100%
- 3.4 SHOCK & VIBRATION: STD SHIPPING

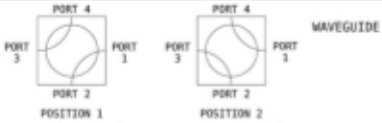
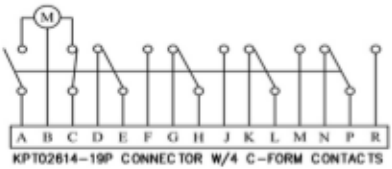
PROPRIETARY INFORMATION  
THIS DOCUMENT CONTAINS PROPRIETARY INFORMATION WHICH SHALL NOT BE REPRODUCED, TRANSMITTED TO OTHER DOCUMENTS, EXCLUDED TO STORES, USED FOR REPRODUCTION OR ANY OTHER PURPOSE WITHOUT PRIOR WRITTEN PERMISSION FROM ABC.

BREAK ALL CORNERS AND SHARP EDGES

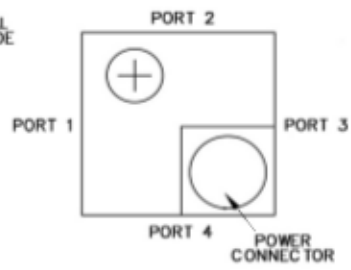
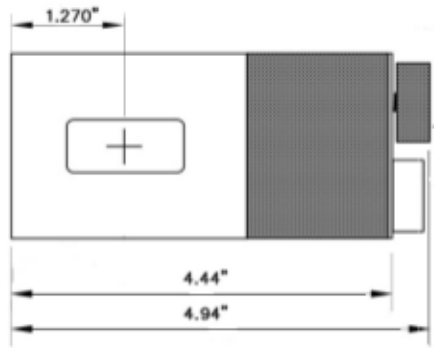
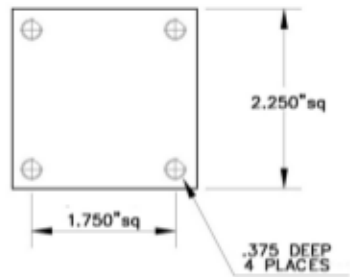
UNLESS OTHERWISE SPECIFIED	UNGR	MC	01/21/2007
FRACTIONAL: + 1/32	CHECKER		
DECIMAL: .00X ± .010			
ANGULAR: .XX ± .020			
MATERIAL: NOTED SPEC:			
FINISH: NOTED SPEC:			

<b>WAVEGUIDE SWITCH</b>	
<b>WR 90</b>	
SCALE	SHEET 1 OF 1

Request A Quote



REVISIONS		APPROVALS			
SYN	DESCRIPTION	DATE	ENGR	PRED	D.A.



1.0 ELECTRICAL

- 1.1 OPERATING FREQUENCY: 7.05 - 10.0 GHZ
- 1.2 RETURN LOSS: -28DB MIN
- 1.3 ISOLATION: 70DB MIN
- 1.4 INSERTION LOSS: .05DB MAX
- 1.5 POWER HANDLING: 5KW CW
- 1.6 DRIVING VOLTAGE: OPTIONAL
- 1.7 C-FORM CONTACTS: 4 IN STD UNIT
- 1.8 INHIBIT CONTACTS: OPTIONAL (OPEN BEFORE VSWR EXCEEDS 1.3:1)
- 1.9 SWITCHING TIME: 80 MSEC MAX
- 1.10 POWER CONNECTOR: OPTIONAL

2.0 MECHANICAL

- 2.1 WAVEGUIDE SIZE: WR112
- 2.2 FLANGE: OPTIONAL
- 2.3 PRESSURE: 20 PSI (INCLUDING DRIVER)
- 2.4 MATERIAL: 80% ALUMINUM
- 2.5 FINISH: LUSTERON ON WAVEGUIDE, ANODIZE ON DRIVER
- 2.6 WEIGHT: .650 KG

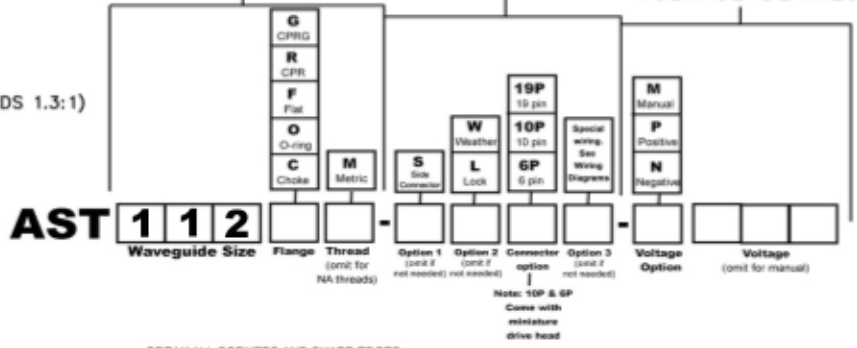
3.0 ENVIRONMENTAL

- 3.1 OPERATING TEMP: -40° TO +75° C
- 3.2 NON OPERATING TEMP: -50° TO +100° C
- 3.3 HUMIDITY: 100%
- 3.4 SHOCK & VIBRATION: STD SHIPPING

WAVEGUIDE DETAILS

DRIVER DETAILS

VOLTAGE DETAILS



BREAK ALL CORNERS AND SHARP EDGES

UNLESS OTHERWISE SPECIFIED		UNITS	MC	01/21/2007
FRACTIONAL	+ 1/32			
DECIMAL	+ .010	DO NOT SCALE	CHECKER	
ANGULAR	+ .020		MED. ENGR.	
	+ 1/2°		ELEC. ENGR.	
MATERIAL: NOTED SPEC:			PRG. ENGR.	
FINISH: NOTED SPEC:			CHIEF ENGR.	

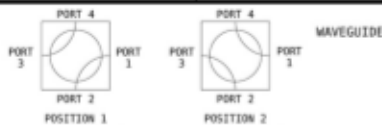
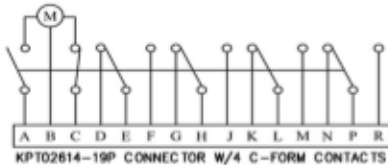
PROPRIETARY INFORMATION  
THIS DOCUMENT CONTAINS PROPRIETARY INFORMATION WHICH SHALL NOT BE REPRODUCED, TRANSMITTED TO OTHER DOCUMENTS, ENCLOSED TO STORES, USED FOR REPRODUCTION OR ANY OTHER PURPOSE WITHOUT PRIOR WRITTEN PERMISSION FROM AST.

WAVEGUIDE SWITCH  
WR 112

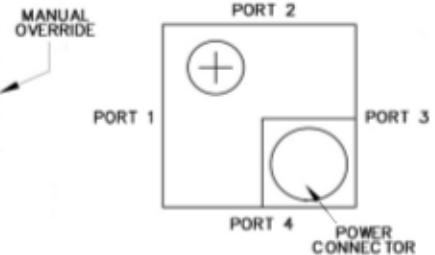
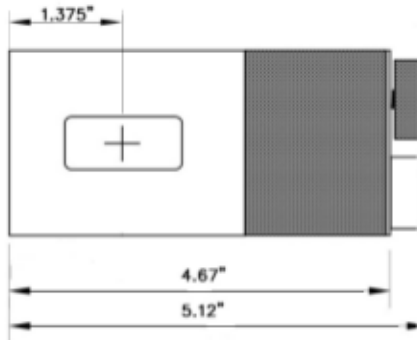
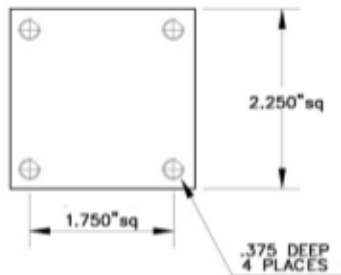
SCALE

SHEET 1 OF 1

Request A Quote



REVISIONS		APPROVALS			
SYN	DESCRIPTION	DATE	ENGR	PRED	D.A.



**1.0 ELECTRICAL**

- 1.1 OPERATING FREQUENCY: 5.85 - 8.2 GHZ
- 1.2 RETURN LOSS: -30DB MIN
- 1.3 ISOLATION: 70DB MIN
- 1.4 INSERTION LOSS: .05DB MAX
- 1.5 POWER HANDLING: 6KW CW
- 1.6 DRIVING VOLTAGE: OPTIONAL
- 1.7 C-FORM CONTACTS: 4 IN STD UNIT
- 1.8 INHIBIT CONTACTS: OPTIONAL (OPEN BEFORE VSWR EXCEEDS 1.3:1)
- 1.9 SWITCHING TIME: 80 MSEC MAX
- 1.10 POWER CONNECTOR: OPTIONAL

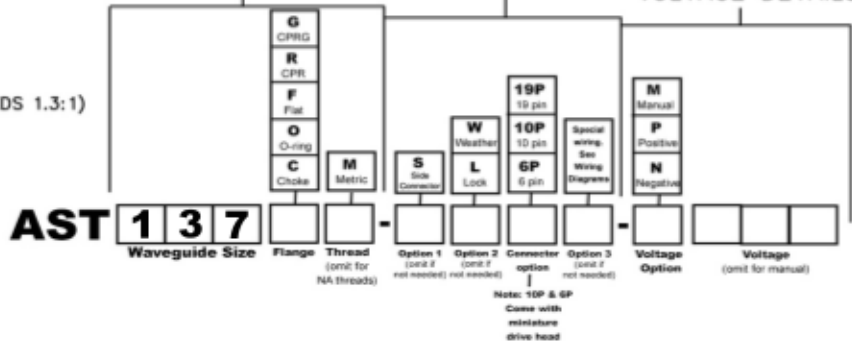
**2.0 MECHANICAL**

- 2.1 WAVEGUIDE SIZE: WR137
- 2.2 FLANGE: OPTIONAL
- 2.3 PRESSURE: 20 PSI (INCLUDING DRIVER)
- 2.4 MATERIAL: 80% ALUMINUM
- 2.5 FINISH: LUSTERON ON WAVEGUIDE, ANODIZE ON DRIVER
- 2.6 WEIGHT: .750 KG

**WAVEGUIDE DETAILS**

**DRIVER DETAILS**

**VOLTAGE DETAILS**



**3.0 ENVIRONMENTAL**

- 3.1 OPERATING TEMP: -40° TO +75° C
- 3.2 NON OPERATING TEMP: -50° TO +100° C
- 3.3 HUMIDITY: 100%
- 3.4 SHOCK & VIBRATION: STD SHIPPING

PROPRIETARY INFORMATION  
THIS DOCUMENT CONTAINS PROPRIETARY INFORMATION WHICH SHALL NOT BE REPRODUCED, TRANSMITTED TO OTHER DOCUMENTS, ENCLOSED TO STORES, USED FOR REPRODUCTION OR ANY OTHER PURPOSE WITHOUT PRIOR WRITTEN PERMISSION FROM AST.

BREAK ALL CORNERS AND SHARP EDGES

UNLESS OTHERWISE SPECIFIED		UNITS	MC	01/21/2007
FRACTIONAL	+ 1/32			
DECIMAL	+ .010	DO NOT SCALE	CHECKER	
ANGULAR	+ .020		MED. ENGR.	
	+ 1/2"		ELEC. ENGR.	
MATERIAL: NOTED SPEC:			PRG. ENGR.	
FINISH: NOTED SPEC:			CHIEF ENGR.	

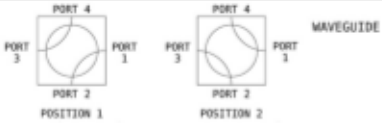
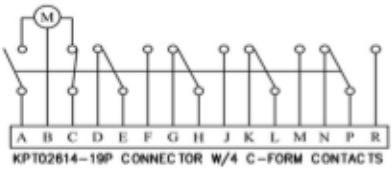
WAVEGUIDE SWITCH  
WR 137

SCALE

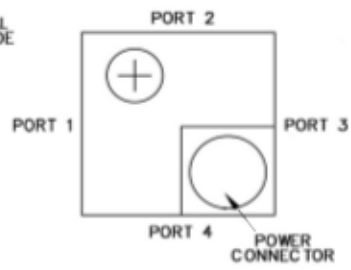
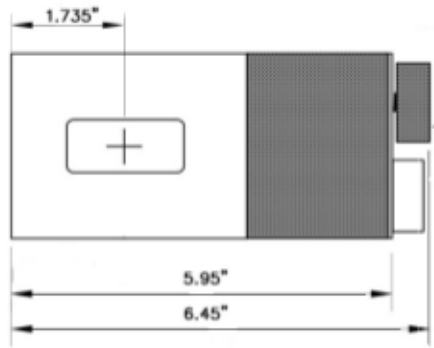
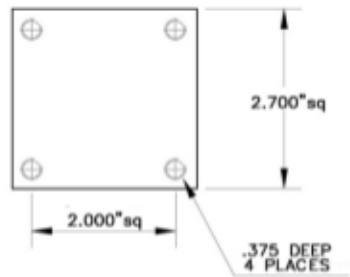
SHEET 1 OF 1

Request A Quote





REVISIONS			APPROVALS		
SYN	DESCRIPTION	DATE	ENGR	PRD	D.A.



**1.0 ELECTRICAL**

- 1.1 OPERATING FREQUENCY: 4.9 - 7.05 GHZ
- 1.2 RETURN LOSS: -30DB MIN
- 1.3 ISOLATION: 70DB MIN
- 1.4 INSERTION LOSS: .05DB MAX
- 1.5 POWER HANDLING: 5KW CW
- 1.6 DRIVING VOLTAGE: OPTIONAL
- 1.7 C-FORM CONTACTS: 4 IN STD UNIT
- 1.8 INHIBIT CONTACTS: OPTIONAL (OPEN BEFORE VSWR EXCEEDS 1.3:1)
- 1.9 SWITCHING TIME: 100 MSEC MAX
- 1.10 POWER CONNECTOR: OPTIONAL

**2.0 MECHANICAL**

- 2.1 WAVEGUIDE SIZE: WR159
- 2.2 FLANGE: OPTIONAL
- 2.3 PRESSURE: 20 PSI (INCLUDING DRIVER)
- 2.4 MATERIAL: 80% ALUMINUM
- 2.5 FINISH: LUSTERON ON WAVEGUIDE, ANODIZE ON DRIVER
- 2.6 WEIGHT: .650 KG

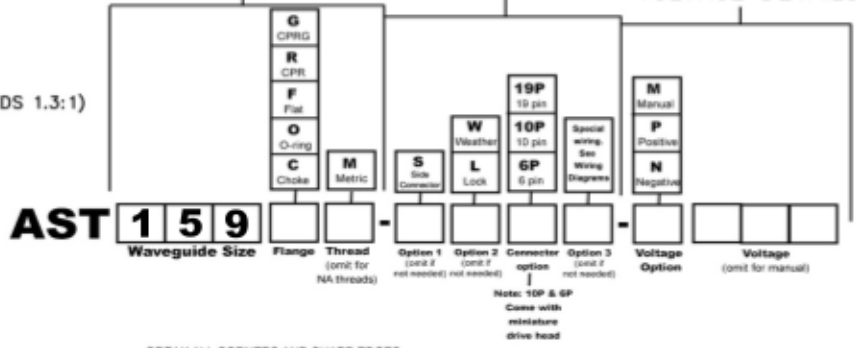
**3.0 ENVIRONMENTAL**

- 3.1 OPERATING TEMP: -40° TO +75° C
- 3.2 NON OPERATING TEMP: -50° TO +100° C
- 3.3 HUMIDITY: 100%
- 3.4 SHOCK & VIBRATION: STD SHIPPING

**WAVEGUIDE DETAILS**

**DRIVER DETAILS**

**VOLTAGE DETAILS**



BREAK ALL CORNERS AND SHARP EDGES

UNLESS OTHERWISE SPECIFIED	UNGR	MC	01/21/2007
FRACTIONAL: ± 1/32	CHECKER		
DECIMAL: .00X ± .010			
ANGULAR: °XX ± .020			

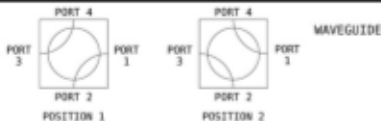
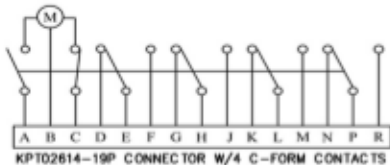
**PROPRIETARY INFORMATION**  
THIS DOCUMENT CONTAINS PROPRIETARY INFORMATION WHICH SHALL NOT BE REPRODUCED, TRANSMITTED TO OTHER DOCUMENTS, ENCLOSED TO STORES, USED FOR REPRODUCTION OR ANY OTHER PURPOSE WITHOUT PRIOR WRITTEN PERMISSION FROM AST.

**WAVEGUIDE SWITCH**  
**WR 159**

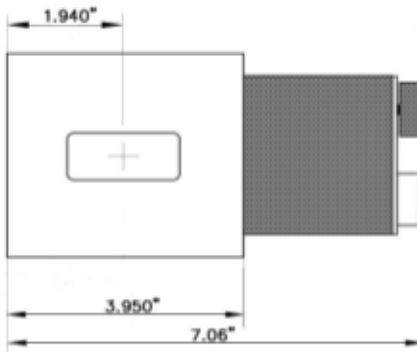
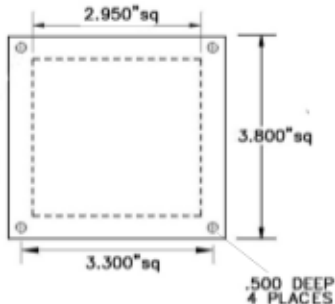
SCALE

SHEET 1 OF 1

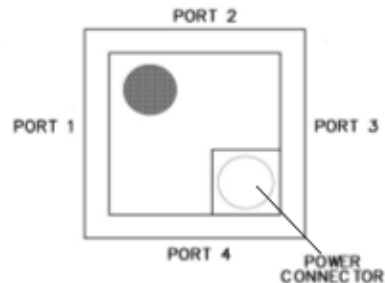




REVISONS		APPROVALS			
SYN	DESCRIPTION	DATE	ENGR	PRED	D.A.



MANUAL  
OVERRIDE



**1.0 ELECTRICAL**

- 1.1 OPERATING FREQUENCY: 3.95 - 5.85 GHZ
- 1.2 RETURN LOSS: -30DB MIN
- 1.3 ISOLATION: 80DB MIN
- 1.4 INSERTION LOSS: .05DB MAX
- 1.5 POWER HANDLING: 5KW CW
- 1.6 DRIVING VOLTAGE: OPTIONAL
- 1.7 C-FORM CONTACTS: 4 IN STD UNIT
- 1.8 INHIBIT CONTACTS: OPTIONAL (OPEN BEFORE VSWR EXCEEDS 1.3:1)
- 1.9 SWITCHING TIME: 100 MSEC MAX
- 1.10 POWER CONNECTOR: OPTIONAL

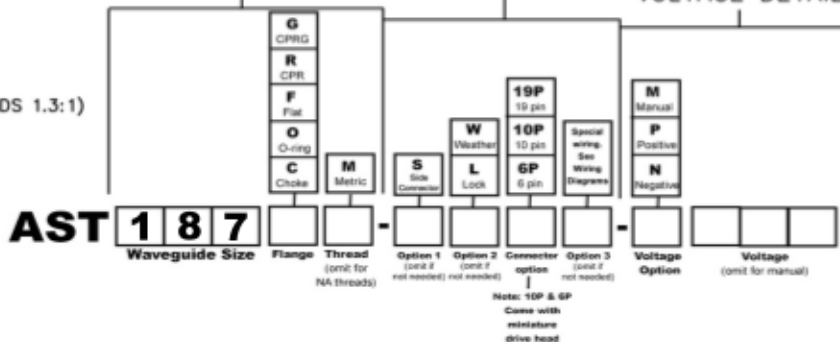
**2.0 MECHANICAL**

- 2.1 WAVEGUIDE SIZE: WR187
- 2.2 FLANGE: OPTIONAL
- 2.3 PRESSURE: 20 PSI (INCLUDING DRIVER)
- 2.4 MATERIAL: 80% ALUMINUM
- 2.5 FINISH: LUSTERON ON WAVEGUIDE, ANODIZE ON DRIVER
- 2.6 WEIGHT: 2.5 KG

**WAVEGUIDE DETAILS**

**DRIVER DETAILS**

**VOLTAGE DETAILS**



**3.0 ENVIRONMENTAL**

- 3.1 OPERATING TEMP: -40° TO +75° C
- 3.2 NON OPERATING TEMP: -50° TO +100° C
- 3.3 HUMIDITY: 100%
- 3.4 SHOCK & VIBRATION: STD SHIPPING

**PROPRIETARY INFORMATION**  
THIS DOCUMENT CONTAINS PROPRIETARY INFORMATION WHICH SHALL NOT BE REPRODUCED, TRANSMITTED TO OTHER DOCUMENTS, ENCLOSED TO STORES, USED FOR REPRODUCTION OR ANY OTHER PURPOSE WITHOUT PRIOR WRITTEN PERMISSION FROM AST.

BREAK ALL CORNERS AND SHARP EDGES

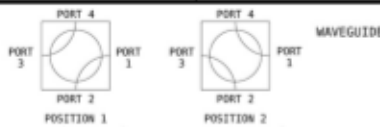
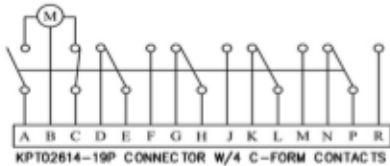
UNLESS OTHERWISE SPECIFIED		UNITS	MC	01/21/2007
FRACTIONAL	+ 1/32	DO NOT SCALE	CHECKER	
DECIMAL	+ .010			
ANGULAR	+ .020			
MATERIAL: NOTED SPEC:				
FINISH: NOTED SPEC:				

**WAVEGUIDE SWITCH**  
**WR 187**

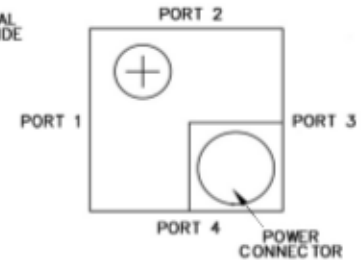
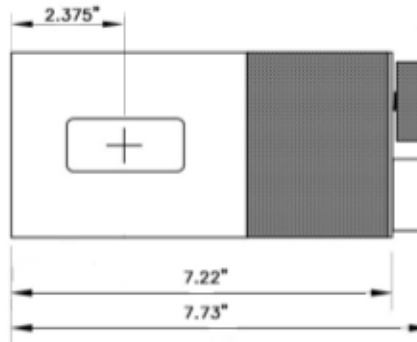
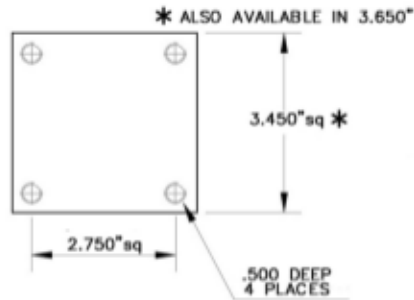
SCALE

SHEET 1 OF 1

Request A Quote



REVISONS		APPROVALS			
SYN	DESCRIPTION	DATE	ENGR	PRED	D.A.



**1.0 ELECTRICAL**

- 1.1 OPERATING FREQUENCY: 3.5 - 4.2 GHZ
- 1.2 RETURN LOSS: -32DB MIN
- 1.3 ISOLATION: 70DB MIN
- 1.4 INSERTION LOSS: .05DB MAX
- 1.5 POWER HANDLING: 10KW CW
- 1.6 DRIVING VOLTAGE: OPTIONAL
- 1.7 C-FORM CONTACTS: 4 IN STD UNIT
- 1.8 INHIBIT CONTACTS: OPTIONAL (OPEN BEFORE VSWR EXCEEDS 1.3:1)
- 1.9 SWITCHING TIME: 120 MSEC MAX
- 1.10 POWER CONNECTOR: OPTIONAL

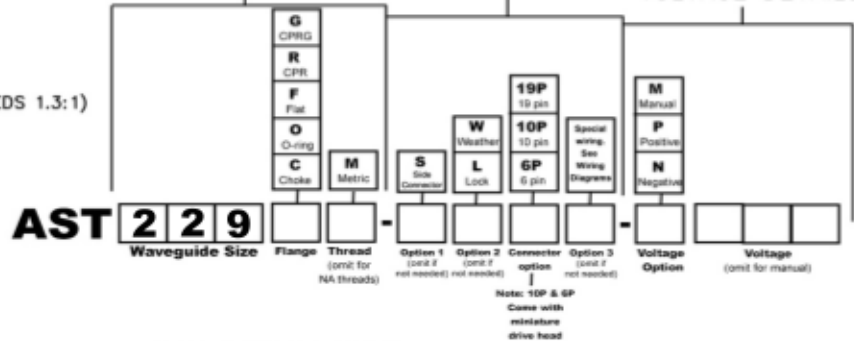
**2.0 MECHANICAL**

- 2.1 WAVEGUIDE SIZE: WR229
- 2.2 FLANGE: OPTIONAL
- 2.3 PRESSURE: 20 PSI (INCLUDING DRIVER)
- 2.4 MATERIAL: 80% ALUMINUM
- 2.5 FINISH: LUSTERON ON WAVEGUIDE, ANODIZE ON DRIVER
- 2.6 WEIGHT: 2.4 KG

**WAVEGUIDE DETAILS**

**DRIVER DETAILS**

**VOLTAGE DETAILS**



**3.0 ENVIRONMENTAL**

- 3.1 OPERATING TEMP: -40° TO +75° C
- 3.2 NON OPERATING TEMP: -50° TO +100° C
- 3.3 HUMIDITY: 100%
- 3.4 SHOCK & VIBRATION: STD SHIPPING

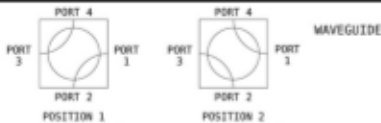
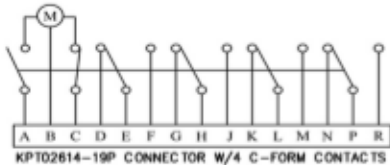
**PROPRIETARY INFORMATION**  
THIS DOCUMENT CONTAINS PROPRIETARY INFORMATION WHICH SHALL NOT BE REPRODUCED, TRANSMITTED TO OTHER DOCUMENTS, EXTENDED TO STORES, USED FOR REPRODUCTION OR ANY OTHER PURPOSE WITHOUT PRIOR WRITTEN PERMISSION FROM AST.

BREAK ALL CORNERS AND SHARP EDGES

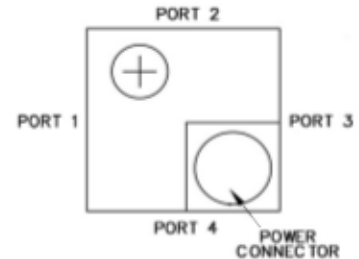
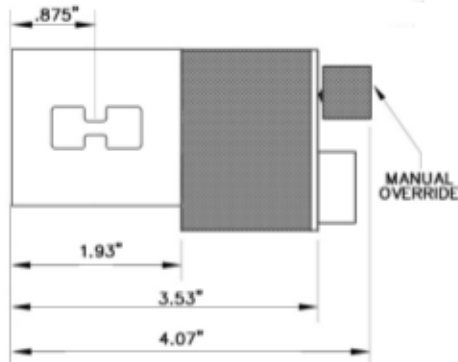
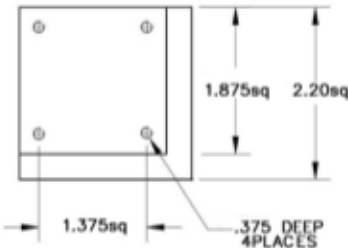
UNLESS OTHERWISE SPECIFIED	UNITS	MC	01/21/2007
FRACTIONAL .XXX ± 1/32	CHECKER		
DECIMAL .XXX ± .010			
ANGULAR .XX ± .020			
ANGULAR .XX ± 1/2°			
MATERIAL: NOTED SPEC:			
FINISH: NOTED SPEC:			

<b>WAVEGUIDE SWITCH</b>	
<b>WR 229</b>	
SCALE	SHEET 1 OF 1

Request A Quote



REVISIONS		APPROVALS			
SYN	DESCRIPTION	DATE	ENGR	PRED	D.A.



**1.0 ELECTRICAL**

**1.1 OPERATING FREQUENCY: 5.8 - 6.5 GHz**

RETURN LOSS: -21DB MIN

ISOLATION: 70DB MIN

INSERTION LOSS: .20DB MAX

**1.2 OPERATING FREQUENCY: 7.25 - 8.4 GHz**

RETURN LOSS: -26DB MIN

ISOLATION: 70DB MIN

INSERTION LOSS: .05DB MAX

**1.3 OPERATING FREQUENCY: 14.0 - 14.5 GHz**

RETURN LOSS: -23DB MIN

ISOLATION: 60DB MIN

INSERTION LOSS: .20DB MAX

**1.4 DRIVING VOLTAGE: OPTIONAL**

**1.5 C-FORM CONTACTS: 4 IN STD UNIT**

**1.6 INHIBIT CONTACTS: OPTIONAL (OPEN BEFORE VSWR EXCEEDS 1.3:1)**

**1.7 SWITCHING TIME: 80 MSEC MAX**

**1.8 POWER CONNECTOR: KPT02614-19P**

**2.0 MECHANICAL**

**2.1 WAVEGUIDE SIZE: WRD580**

**2.2 FLANGE: OPTIONAL**

**2.3 PRESSURE: 20 PSI (INCLUDING DRIVER)**

**2.4 MATERIAL: 80% ALUMINUM**

**2.5 FINISH: LUSTERON ON WAVEGUIDE, ANODIZE ON DRIVER**

**2.6 WEIGHT: .500 KG**

**3.0 ENVIRONMENTAL**

**3.1 OPERATING TEMP: -40° TO +75° C**

**3.2 NON OPERATING TEMP: -50° TO +100° C**

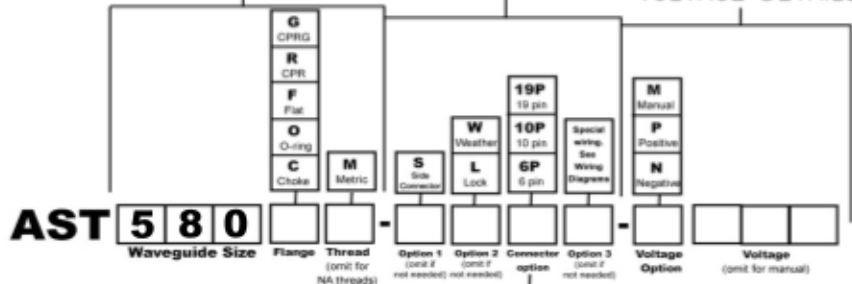
**3.3 HUMIDITY: 100%**

**3.4 SHOCK & VIBRATION: STD SHIPPING**

**WAVEGUIDE DETAILS**

**DRIVER DETAILS**

**VOLTAGE DETAILS**



BREAK ALL CORNERS AND SHARP EDGES

UNLESS OTHERWISE SPECIFIED

FRACTIONAL .XXX ± 1/32	DECIMAL .XXX ± .010	ANGULAR .XX ± .020	DO NOT SCALE
------------------------	---------------------	--------------------	--------------

MATERIAL: NOTED SPEC:

FINISH: NOTED SPEC:

DATE	MC	01/21/2007
CHECKER		
MED. ENGR.		
ELEC. ENGR.		
PRG. ENGR.		
CHIEF ENGR.		

**WAVEGUIDE SWITCH**  
WRD580

SCALE: \_\_\_\_\_ SHEET 1 OF 1

**PROPRIETARY INFORMATION**  
THIS DOCUMENT CONTAINS PROPRIETARY INFORMATION WHICH SHALL NOT BE REPRODUCED, TRANSMITTED TO OTHER DOCUMENTS, ENCLOSED TO STORES, USED FOR REPRODUCTION OR ANY OTHER PURPOSE WITHOUT PRIOR WRITTEN PERMISSION FROM AST.

**Request A Quote**